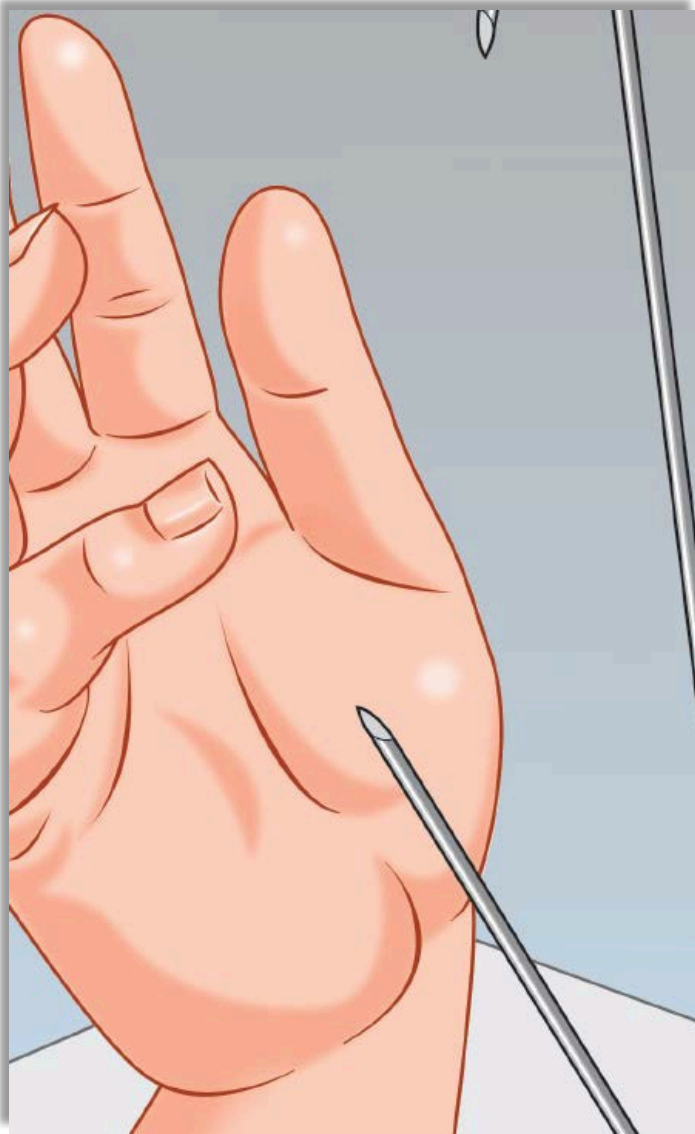
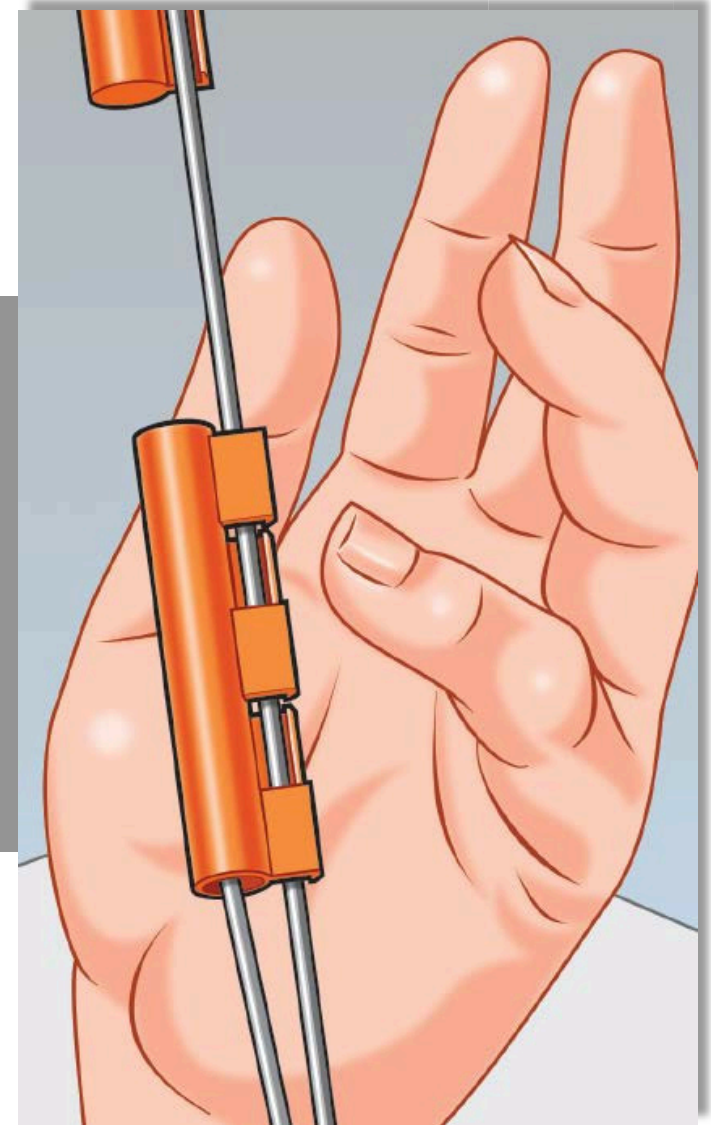
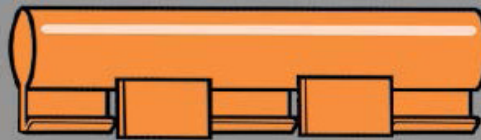


Knauf AMF Ceilings Ltd



Protect against
injuries – fit the
**Knauf AMF
Safety Sleeve**



Safety Sleeve – Background



The ceiling void can be a congested maze of grid, ducts, pipes, cables and wires which are required for the many services in this space. Grid hanging wires with sharp unprotected ends present a particular hazard to contractors and other trade professionals who access the void.



Safety Sleeve – Background



Working in collaboration with specialist contractor John Taylor, Knauf AMF has developed the Knauf AMF Safety Sleeve to improve safety for everyone working above the ceiling, either during construction or when carrying out maintenance work.



What price safety?



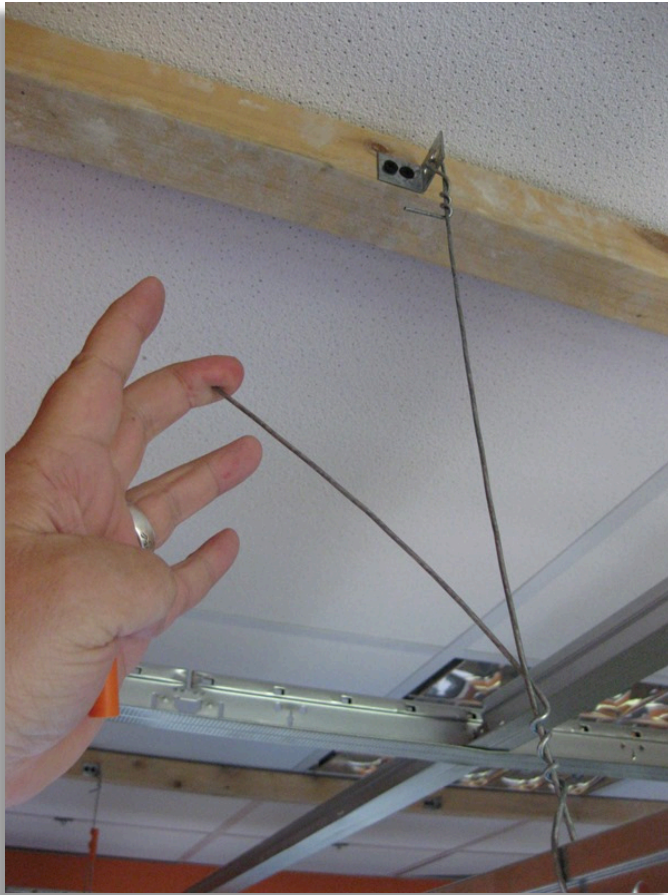
Safety Sleeve - Installation



- Designed to be attached to standard 2mm diameter suspended ceiling wire hangers
- Can be fitted to new build or retro fitted to existing ceilings
- Clips onto the hanger and then slides up or down to cover the exposed cut end
- Easily fitted with one hand
- Friction holds the Safety Sleeve in place
- The sleeve is compatible with **all** ceiling brands.



Safety Sleeve - Installation



Problem



Solution

