



SSHA CRAIGINCHES – INSTALLATION PRODUCT

Steel Components

March 2017

MEET THE COMPANY & INSTALL TEAM

Structural Steel

by John Walker

Steel is an essential part of the construction to provide strength and stability. The steel used on the project is made from around 80% recycled materials and any waste during the manufacturing process is recycled for future use.

The life-cycle of steel

Steel is a unique material because it is truly recyclable – when steel is recycled it becomes new steel and not an inferior product. Since steel does not downgrade when recycled, it can be re-used over and over again and moreover, steel is the most recycled material in the world. The impact of making steel can be viewed as an investment in a material which will be used again and again, rather than a one-off, making steel a highly sustainable material.

Scrap steel is an essential ingredient for all new steel, so every steel-making plant is a recycling plant. The value of scrap steel ensures that whenever it can be collected and recycled, it is. But in many applications, steel lasts for a long time, so there is a lot of steel in

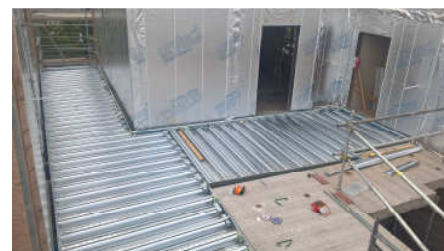
the world, doing a useful job. At the same time, global demand for steel is growing. So, even with efficient recovery and recycling, scrap steel only accounts for about one third of total steel demand. At least for the foreseeable future, steel will need to be made from virgin resources, but it is essential to ensure that recovery and recycling is designed-in to all steel applications and that every piece of steel which can be recycled is.

A few facts about the life-cycle of steel:

- The recycling rate of steel depends on the end-use, but on average around 85% of steel, at the end of its first useful life, is recycled.
- Over 99% of steel from scrap cars is recycled
- A UK study showed that 94% of steel is recycled when a building is demolished
- 99% of structural steel is recycled or re-used when a building is demolished
- In Europe, over 70% of steel packaging is recycled, which is far more than any other packaging material



Port Talbot in south Wales, which produces slab, hot rolled, cold rolled and galvanised coil.



Steel is used in many of the most sustainable buildings. Steel building systems are very well rated in schemes such as BREEAM and LEED and our products are frequently used in some of the highest-rated buildings.