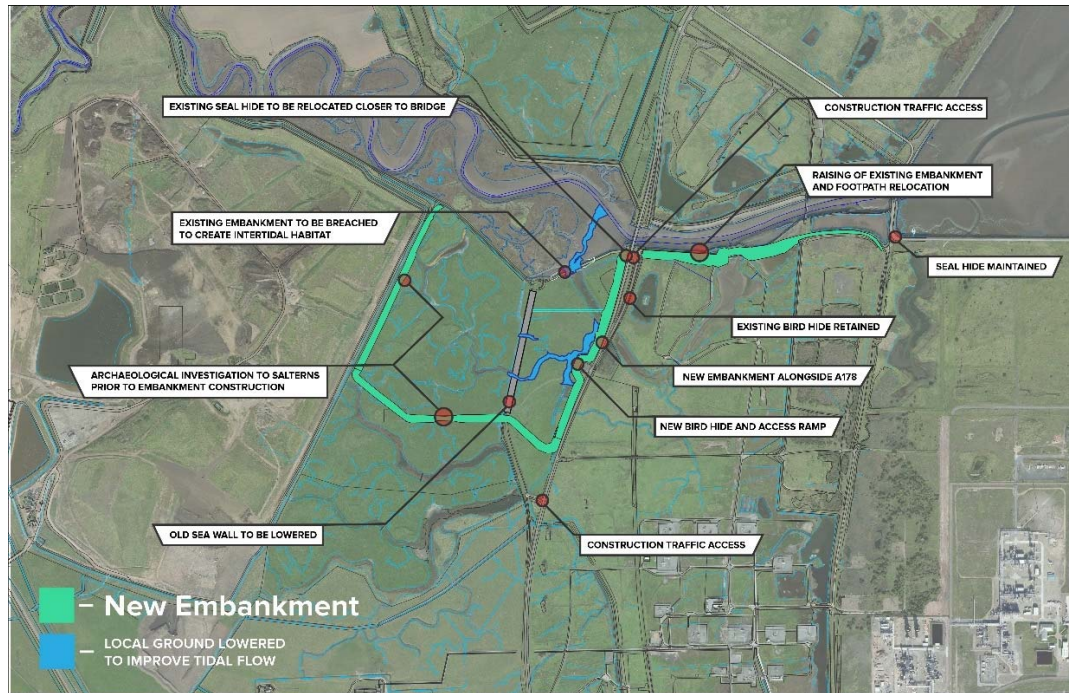


## Greatham South FAS - Seal and Bird Hides

### Introduction

The Greatham South FAS involves the construction of new flood defences and opening of the existing northern embankment on the INOVYN site creating approximately 25 hectares of intertidal habitat as shown below:



The area is renowned for its wildlife in what are predominantly industrial surroundings. The area is popular with bird watchers with the seals, which frequent the creek, being a further attraction.

### Original Scope

The original work scope regarding the bird and seal hides was as follows:

- Relocate existing timber seal hide
- Provide new bird hide, similar in style to the existing seal hide

The existing hide is a simple timber frame and panel structure, shown below:



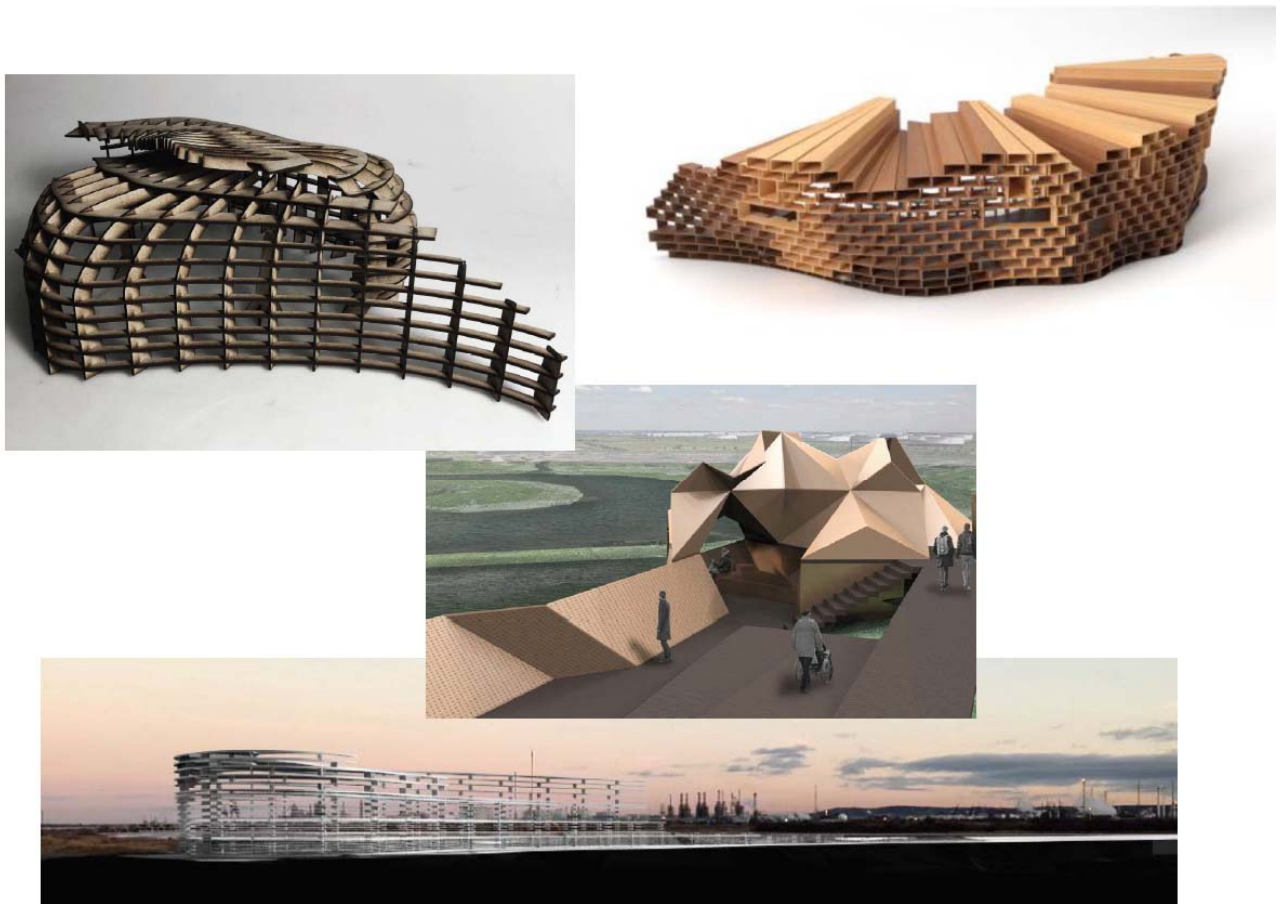
## Engagement with local stakeholders and Leeds Beckett University

Various efficiencies have been realised on the Greatham South Scheme and the decision was taken by the site team to reinvest some of this saving in the project and provide improved facilities for viewing the seals and birds.

Through engagement with RSPB and Teesside Environmental Trust a further donation towards the structures has been secured raising the budget available from the original £25k to £100k.

Several Universities were approached regarding the potential involvement of students in designing the new hides and Leeds Beckett University's School of Architecture jumped at the opportunity.

Several final year students visited the site in December 2017 and started work on individual concept designs which were presented to the wider site team, including representatives from RSPB and Teesside Environmental Trust in February 2018.



Leeds Beckett University's Initial Seal and Bird Viewing Structure Designs



The initial designs were very well received and work is now progressing on a final, fully designed and costed solution with construction on site expected later this year. Leeds Beckett University's involvement is continuing and the students involved will be invited to assist in assembling the structure on site.

