



SCISSORSAFE
FALL PROTECTION SYSTEMS

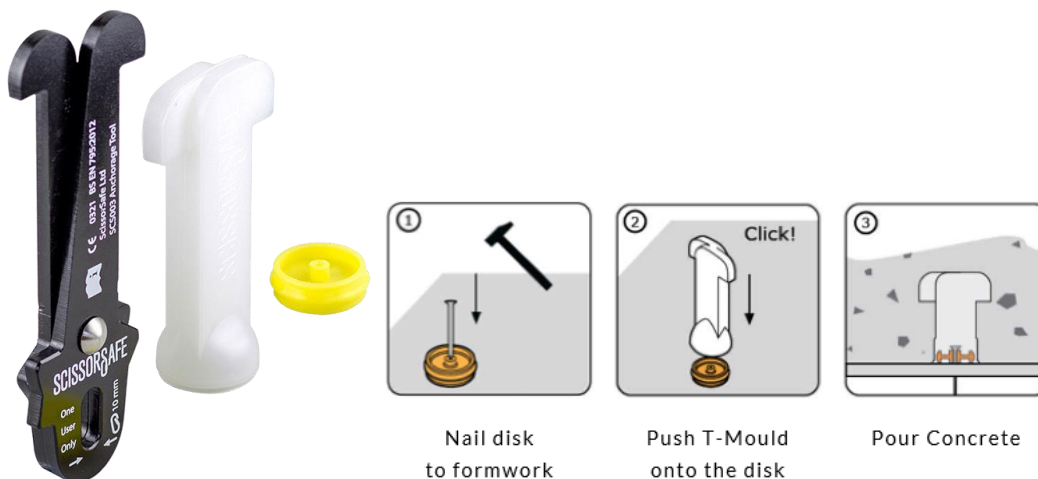
Cast in Anchor System

Scissor safe Anchorage Points are cast into the structure

Inexpensive Two-Part Plastic Void Formers are nailed to the decking formwork from Scissor safe designed setting-out plans, these ensure that drilled anchors will not be needed.

The Cornbrook Project has utilized this design, provided by Scissor Safe as it is a more convenient and safer method of working when working at height with a harness.

As the Cast is set onto the decking, the concrete poured will set this in securing the cast, this then provides the opportunity for the anchor to be inserted when working at height is needed.



Securing Everyone's Safety

Northern England Region – Cornbrook Residential, Manchester