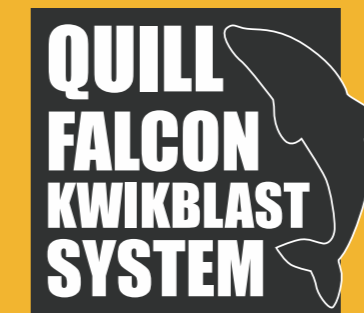




Quill International Group, Castle Lane, Melbourne, Derbyshire, DE73 8JB (UK)  
T: +44 (0) 1332 864664 | F: +44 (0) 1332 863292 | E: sales@quillinternational.com  
[www.quillinternational.com](http://www.quillinternational.com)







# CONTENTS

## WHY QUILL FALCON

Welcome	06
Impossible Invention	08
What's New?	10
How It Works	12
Very Versatile	14
Best Of British	16
Ridiculously Reliable	18
Brilliant Backup	20
In A Nutshell	22

## WHAT WE DO

Offshore	26
Shipping	32
Highways	40
Construction	44
Heritage	50
Asbestos & Hazardous	56
Automotive	60

## SYSTEM SPECIFICATIONS

Quill Falcon Cyclone 30	62
Quill Falcon Cyclone 60	63
Quill Falcon Cyclone 120	64
Quill Falcon Cyclone 200	65
Quill Falcon Cyclone 60T	66
Quill Falcon Cyclone 120T	67
Quill Falcon Cyclone 120 Complete	68
Compare Cyclone Systems	70

## USEFUL ADDITIONS

Blast Media	72
How To Hire Or Buy a Quill Falcon Cyclone System	74
Did You Know?	74

# WELCOME.



**EVER SINCE THE FIRST QUILL FALCON WAS CONCEIVED IN 1997, WE HAVE BUILT PRECISION DUSTLESS BLASTING SYSTEMS THAT CHALLENGE WHAT IS POSSIBLE. THESE IN TURN HAVE CHALLENGED THEIR OWNERS AND OPERATIVES TO EXPLORE NEW TERRITORIES AND CONQUER DIFFICULT MARKETS.**

Our Kwikblast systems epitomise the values of the designers and engineers who have created them. Each one instilled with the best of British design and engineering, delivering capability with outstanding power and performance.

This year we have continued to break new ground, defy conventions and encourage each other to go further.

The end result?

The new Quill Falcon Cyclone...it's simply brilliant.

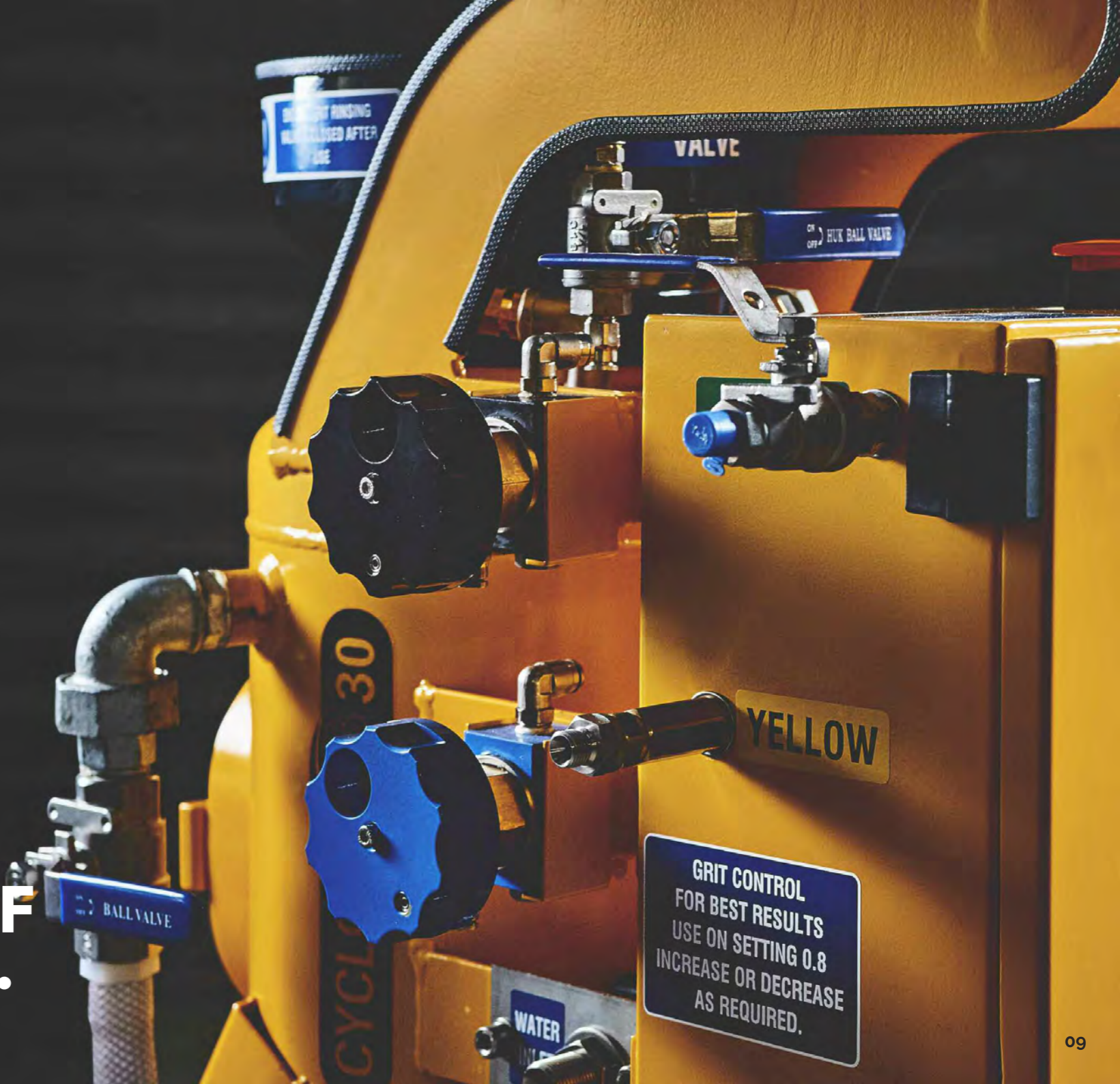
# IMPOSSIBLE INVENTION.

OUR GOAL WITH THE CYCLONE WAS TO DO THE IMPOSSIBLE: ENGINEER A SYSTEM THAT WAS FASTER IN OPERATION YET CONSUMED LESS GRIT AND LESS WATER.

To do that, we had to start from scratch, reimagining and reinventing every essential element to create a system that allowed complete control over the air, water and grit mix.

The result is more than just a new Quill Falcon.

IT'S THE  
FUTURE OF  
BLASTING.



# WHAT'S NEW?



**THE QUILL FALCON STILL COMBINES THE SIMPLICITY OF CONVENTIONAL GRIT BLASTING WITH THE EFFECTIVENESS OF ULTRA-HIGH PRESSURE (UHP) JETTING WITHOUT THE ASSOCIATED HAZARDS AND COMPLICATIONS...**

Only difference is the Cyclone is up to 50% faster and more powerful than before.

The patented system still rapidly removes coatings, corrosion and residues leaving surfaces profiled, contaminant free and cleaned to SA 2½, HB 2½, SB 2½, NACE VIS 9, WAB 6/10 in seconds..

Just the Cyclone uses up to 80% less water and up to 70% less grit than previously.

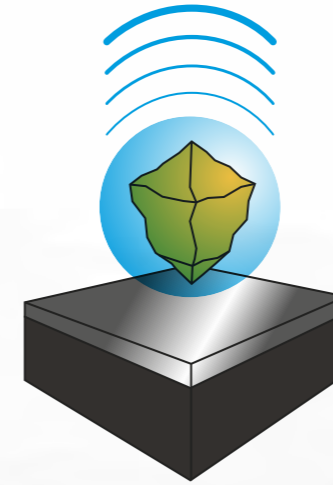
We have also added a new anti-fatigue dead man's handle which is lightweight, robust and reliable. Air operated so no electrics to go wrong. Can be thumb operated for precision projects or a ball inserted for longer duration usage making the whole experience just that little bit better.

With technological innovation that puts an emphasis on performance. The Cyclone is faster and dryer in operation, comes with improved reliability and simpler maintenance. Making it easy to see why our customers are increasing their productivity whilst saving time and money.

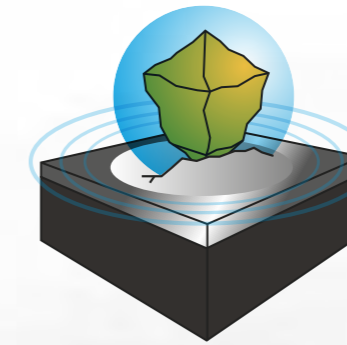
**In a word it's super.**



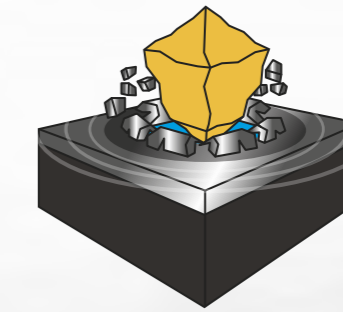
# HOW IT WORKS.



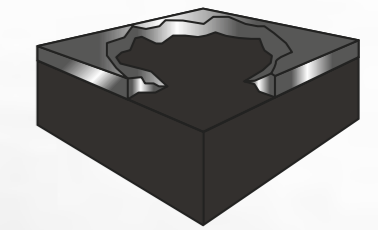
The blast media is coated in a water jacket by surface tension, which increases the speed and mass enhancing the force of impact upon the blast surface. Water presence lubricates and eliminates hose and nozzle wear.



The blast media hits the surface, the water jacket continues moving but still holds onto the blast media by surface tension. The water jacket hits the surface and prevents any grit bounce.



The water jacket snaps round the blast media into the crack under the blast surface and hydrostatically blasts a larger amount of surface coating away.



The end result is a profiled surface, feathered edges and the most efficient use of the least amount of blast media and water.

# VERY VERSATILE.

**WHETHER YOU ARE BLASTING AWAY  
CORROSION AS PART OF A MAINTENANCE  
PROGRAMME, REMOVING COATINGS FOR  
INSPECTION PURPOSES OR REMOVING  
MATERIAL AND RESIDUES THAT ARE NO  
LONGER REQUIRED THE QUILL FALCON  
CYCLONE WILL PROVIDE YOU WITH CLEAN,  
CONTAMINANT FREE, PROFILED SURFACES  
IN SECONDS.**

From the heavy task of blasting through reinforced concrete to the more delicate and detailed operation of removing paint from aluminium without profiling the surface. The Quill Falcon Cyclones capabilities are endless.

By varying the grit type, volume of air and water consumption, the speed and surface profile can be altered to suit almost any job you throw at it.

**The Quill Falcon Cyclone - your reliable, flexible friend.**







# BEST OF BRITISH.

UNLIKE SOME OF OUR COMPETITORS, WE DON'T BITCH ABOUT THE COMPETITION, IT'S NOT OUR STYLE AND WE DON'T NEED TO, WE ARE CONFIDENT IN OUR CYCLONE SYSTEM - IT SPEAKS FOR ITSELF.

British design with British engineering – it's a powerful thing.

From the oilfields in Baku in Azerbaijan to oil rigs in the South Pacific Ocean our Quill Falcons are taken to some of the most remote locations the world has to offer. It is therefore essential that when our Cyclone systems are dispatched from our production facility in the UK that they are built to last.

Our fantastic team of engineers take enormous pride in producing what is regarded as the most technologically advanced blasting system available in the world today. The systems are built to withstand the most demanding of conditions whilst being easy to use and service.

The Quill Falcon Cyclone is manufactured, supplied and supported by the very people that designed it.

What could be better?

# BRITISH DESIGN WITH BRITISH ENGINEERING – IT'S A POWERFUL THING.

ENSURE GRIT RINSING  
VALVE IS CLOSED AFTER  
USE

PDB

# RIDICULOUSLY RELIABLE.



A CUSTOMER ONCE SAID

// **MACHINES BREAK -  
IT'S A FACT OF LIFE.  
IT'S WHAT YOU DO  
TO PUT IT RIGHT  
THAT COUNTS** //

In the past year our Quill Falcon hire fleet has completed 2,880 days or 23,040 hours of blasting with only 3 machine breakdowns due to mechanical failure.

Of those 3 machines all were back up and running within 24 hours..

Built in reliability with top class service and support - in the unlikely event you should you need it.

**Lovely.**

# BRILLIANT BACK UP.



**IN THE UK WE HAVE TEAMS OF ENGINEERS THAT ARE ON STANDBY TO HELP AND SUPPORT SHOULD YOU REQUIRE IT. ACTUAL ENGINEERS WHO ARE INVOLVED IN THE DESIGN AND MANUFACTURE OF THE CYCLONE SYSTEM SO THEY KNOW HOW IT WORKS AND THEY KNOW HOW TO FIX IT QUICKLY - IN THE UNLIKELY EVENT OF A PROBLEM - TO HAVE YOU BACK UP AND RUNNING IN NO TIME.**

Over the past 40 years in business Quill has built an excellent reputation not just in the systems we design and manufacture but in the support and service we provide.

Providing our customers around the globe with what they want, when they want it, no matter how logistically difficult it is to fulfil, is something we take pride in.

"How to set up" movies, electronic workshop manuals, operators step by step guides available in a range of languages and access to help and advice from our superb team of engineers are just a few of the examples of the lengths we go to, to ensure that our customer's needs and expectations are met at every level.

# IN A NUTSHELL...



**Up to 50% faster, blasts up to 20m<sup>2</sup> per hour**  
We were quick before but now you should see us!

Consumes **up to 80% less water** and **up to 70% less grit** meaning there is less grit to purchase, clear up and dispose of - marvellous.

Profiles and cleans surfaces to SA 2 1/2, HB 2 1/2, SB 2 1/2, NACE VIS g, WAB 6/10, removes soluble salts and chlorides and feathers edges for quality repairs meaning new coatings stick better for longer.

**Up to 21 dB less noise** and **less gingering** than with a dry blaster.

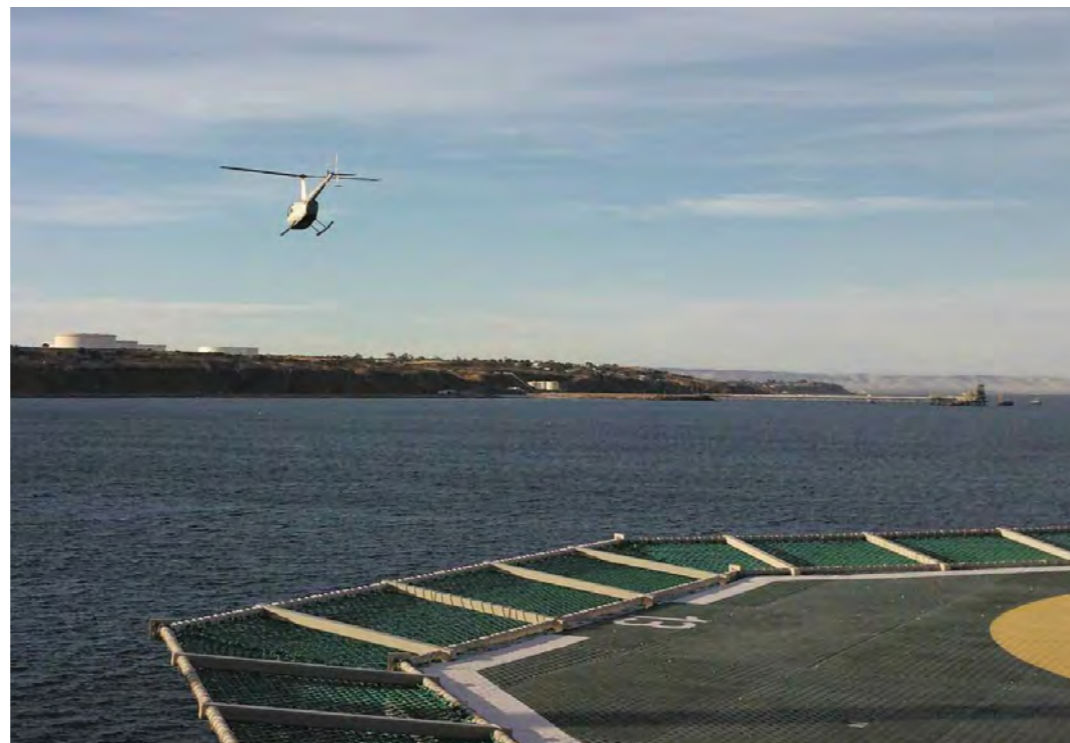
Ex rated, Zone 1 approved, Baseefa accredited, TuV, ATEX and NORSOK compliant.

Manufactured sold and hired by the very people who designed the equipment. We are actual engineers so because we made it we also know how to maintain it... properly. **We care - it's our name on the kit.**



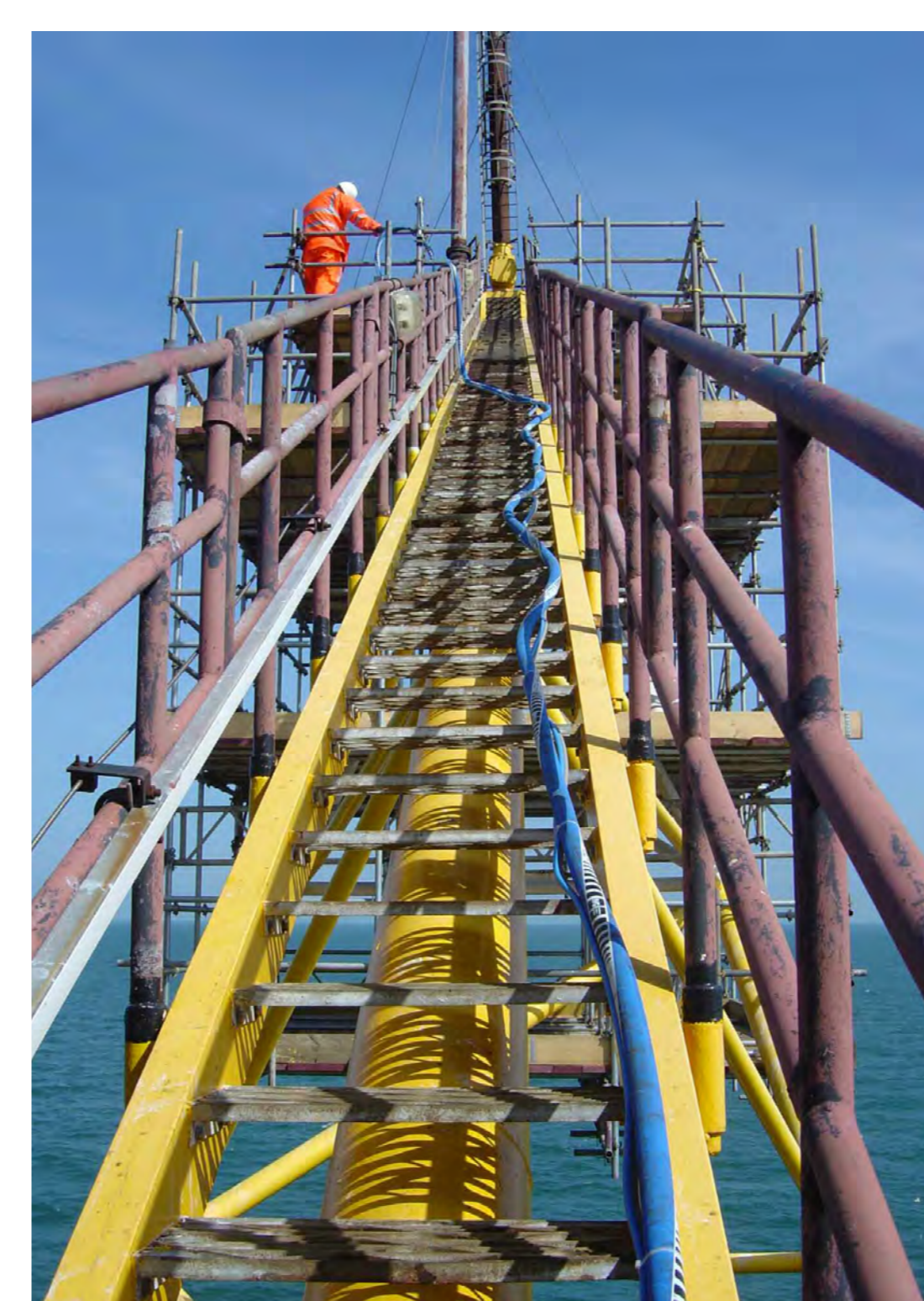
# WHAT WE DO.

The Quill Falcon can be found on **6 of the world's 7 continents**, in over **35 different countries**. It is employed **24 hours a day, 7 days a week, 365 days a year** around the globe blasting offshore rigs, drilling platforms, ships, roads, bridges and buildings.



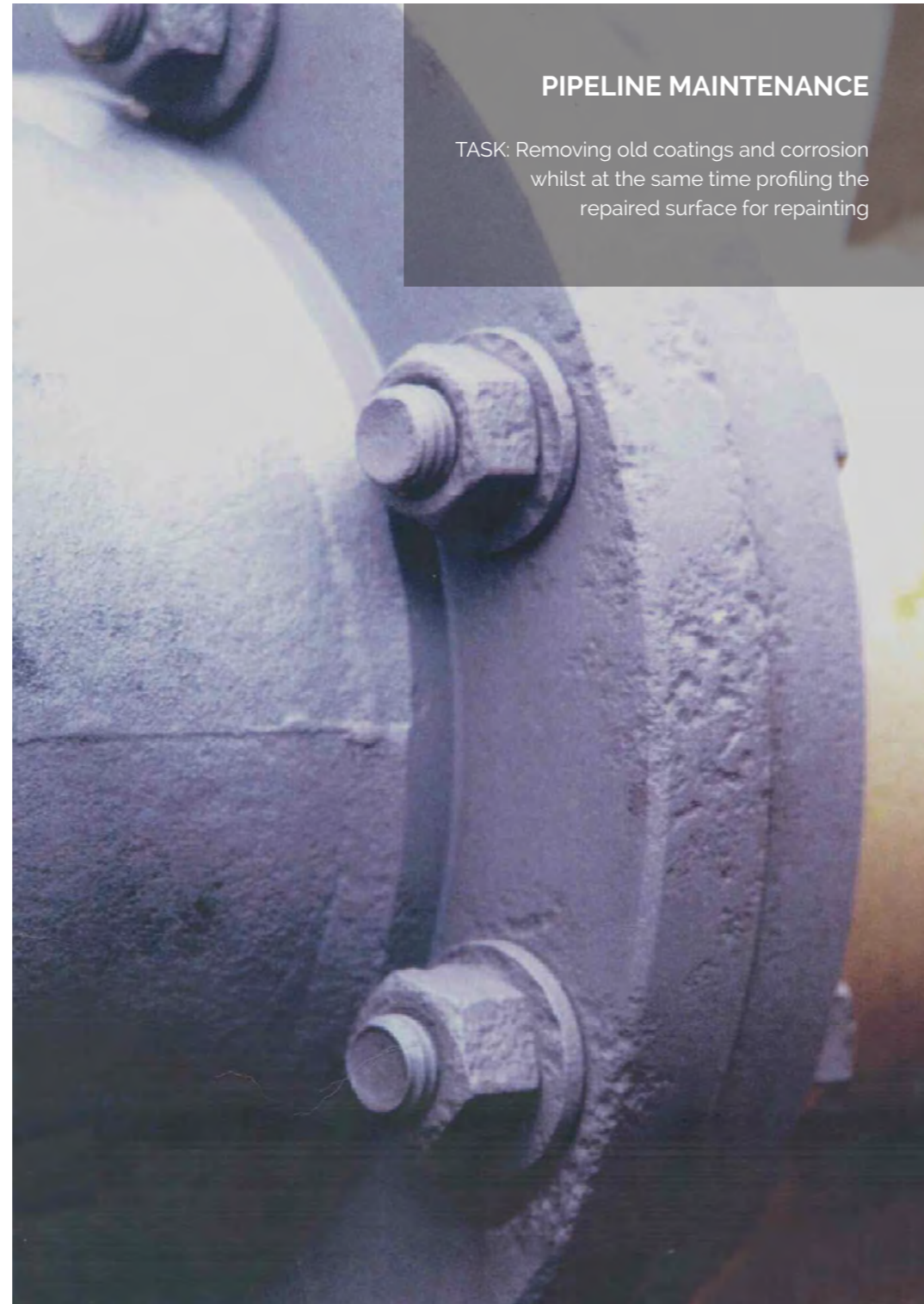
**OFFSHORE HELIPAD  
MAINTENANCE**

TASK: Removing old coatings  
whilst at the same time profiling  
the surface for repainting



**OFFSHORE PLATFORM**

TASK: Removing old coatings whilst at the same time profiling the surface for repainting



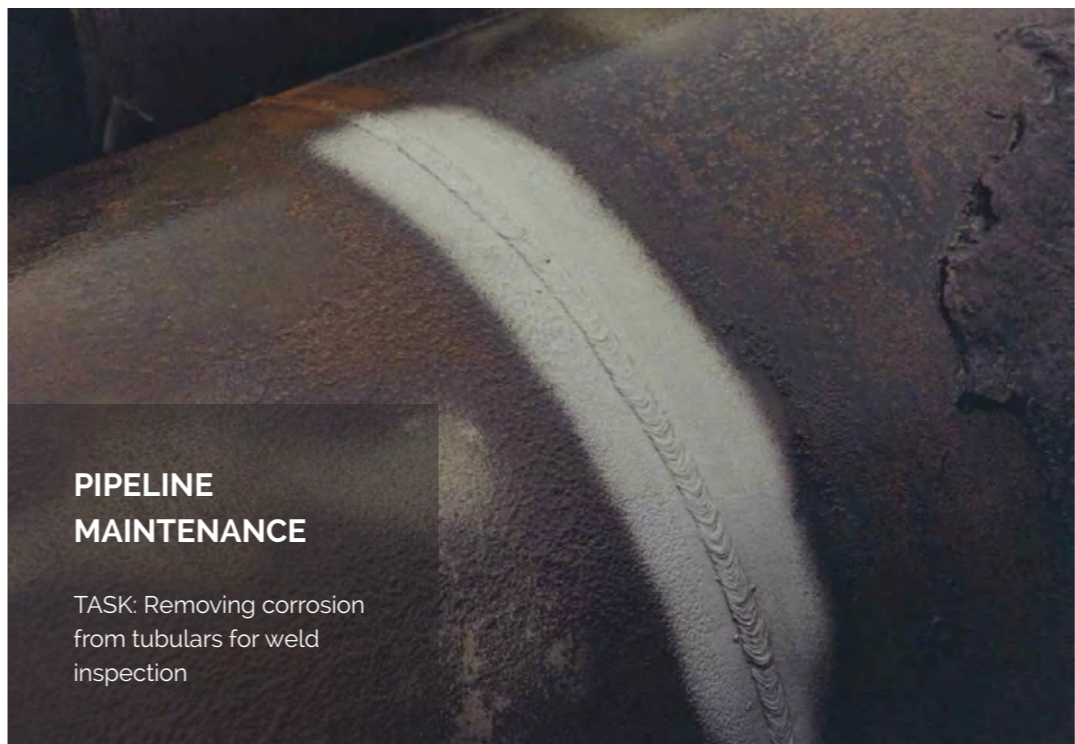
**PIPELINE MAINTENANCE**

TASK: Removing old coatings and corrosion whilst at the same time profiling the repaired surface for repainting



**PIPELINE MAINTENANCE**

TASK: Removal of bitumen from pipeline



**PIPELINE MAINTENANCE**

TASK: Removing corrosion from tubulars for weld inspection



**NDT PREPARATION**

TASK: Precision coating removal for NDT preparation





## HULL MAINTENANCE

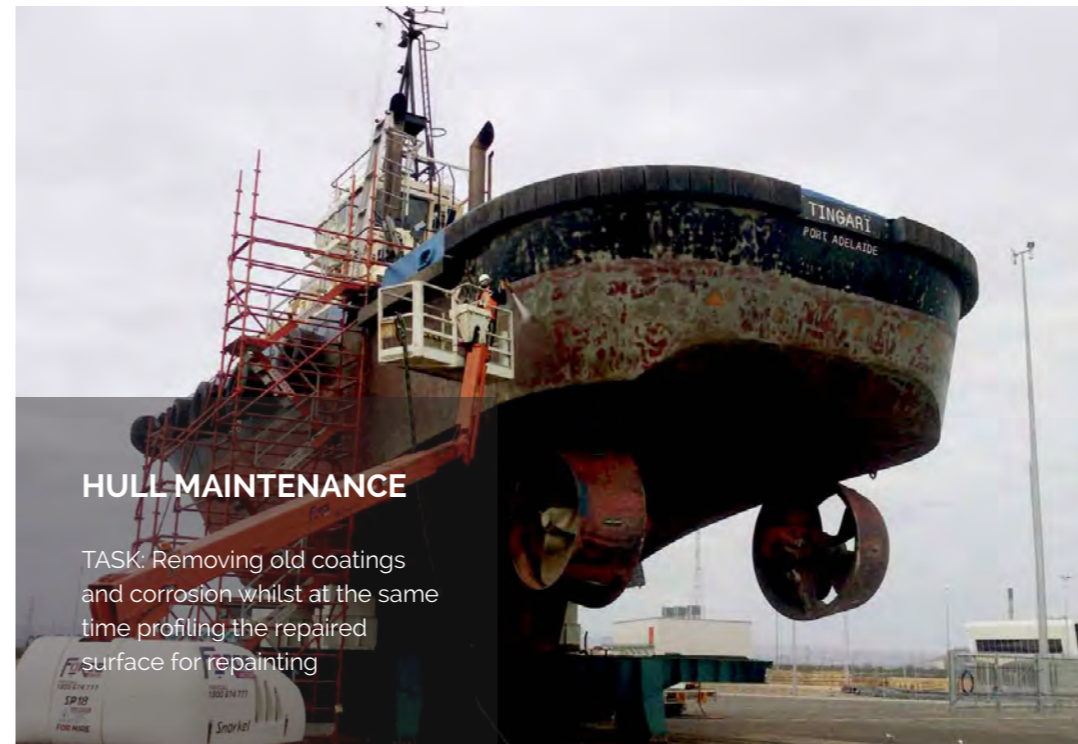
TASK: Removing old coatings, corrosion and soluble salts whilst at the same time profiling the repaired surface for repainting





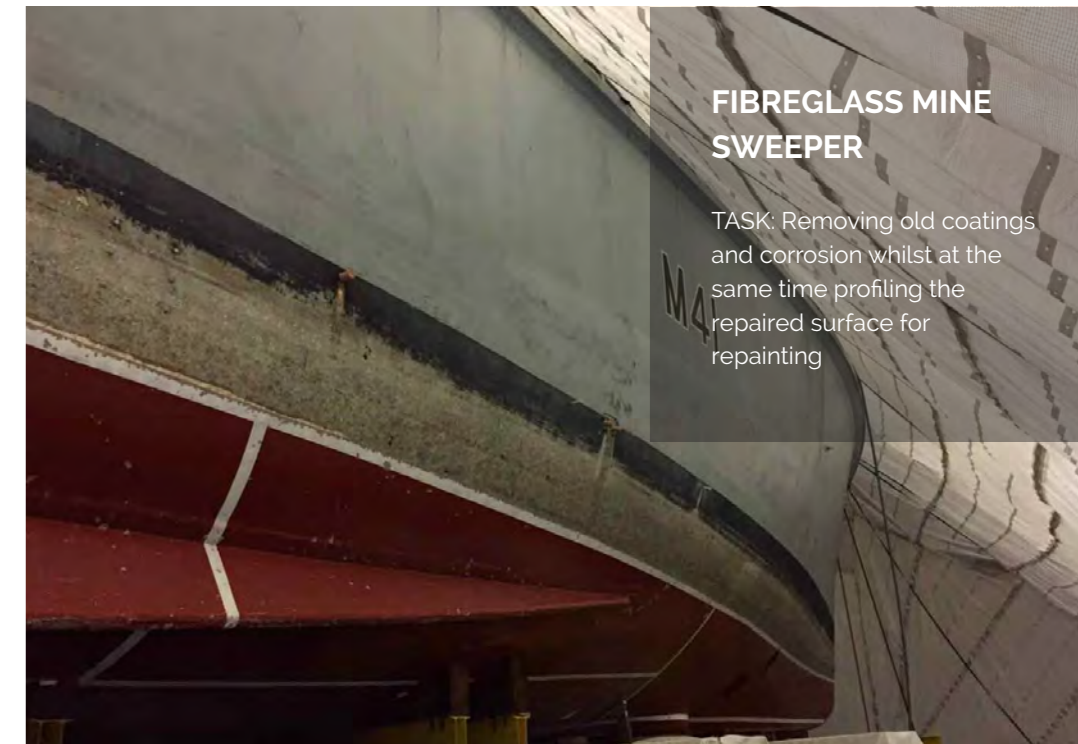
### STORES SHIP

TASK: Coating and corrosion removal



### HULL MAINTENANCE

TASK: Removing old coatings and corrosion whilst at the same time profiling the repaired surface for repainting



### FIBREGLASS MINE SWEEPER

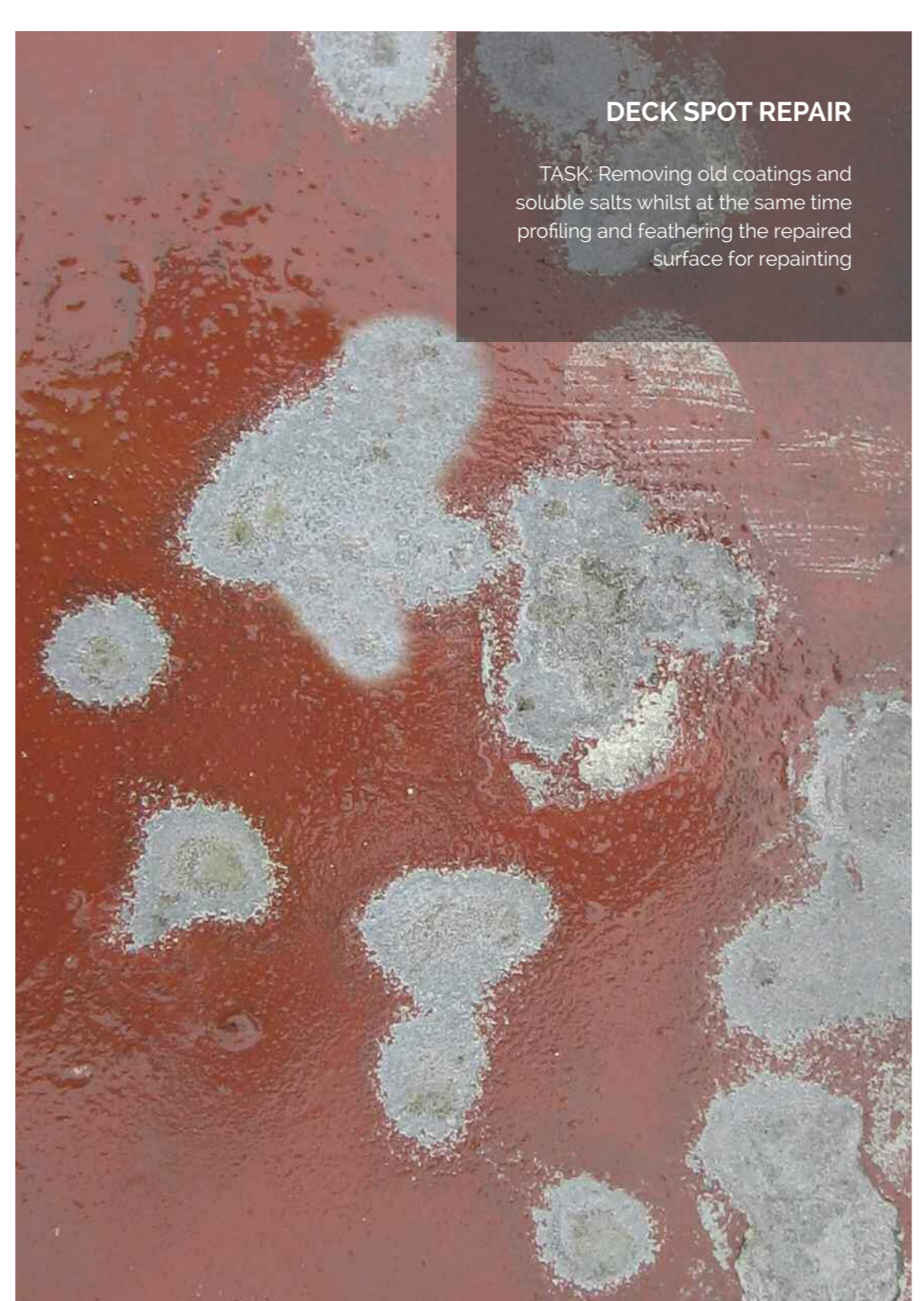
TASK: Removing old coatings and corrosion whilst at the same time profiling the repaired surface for repainting





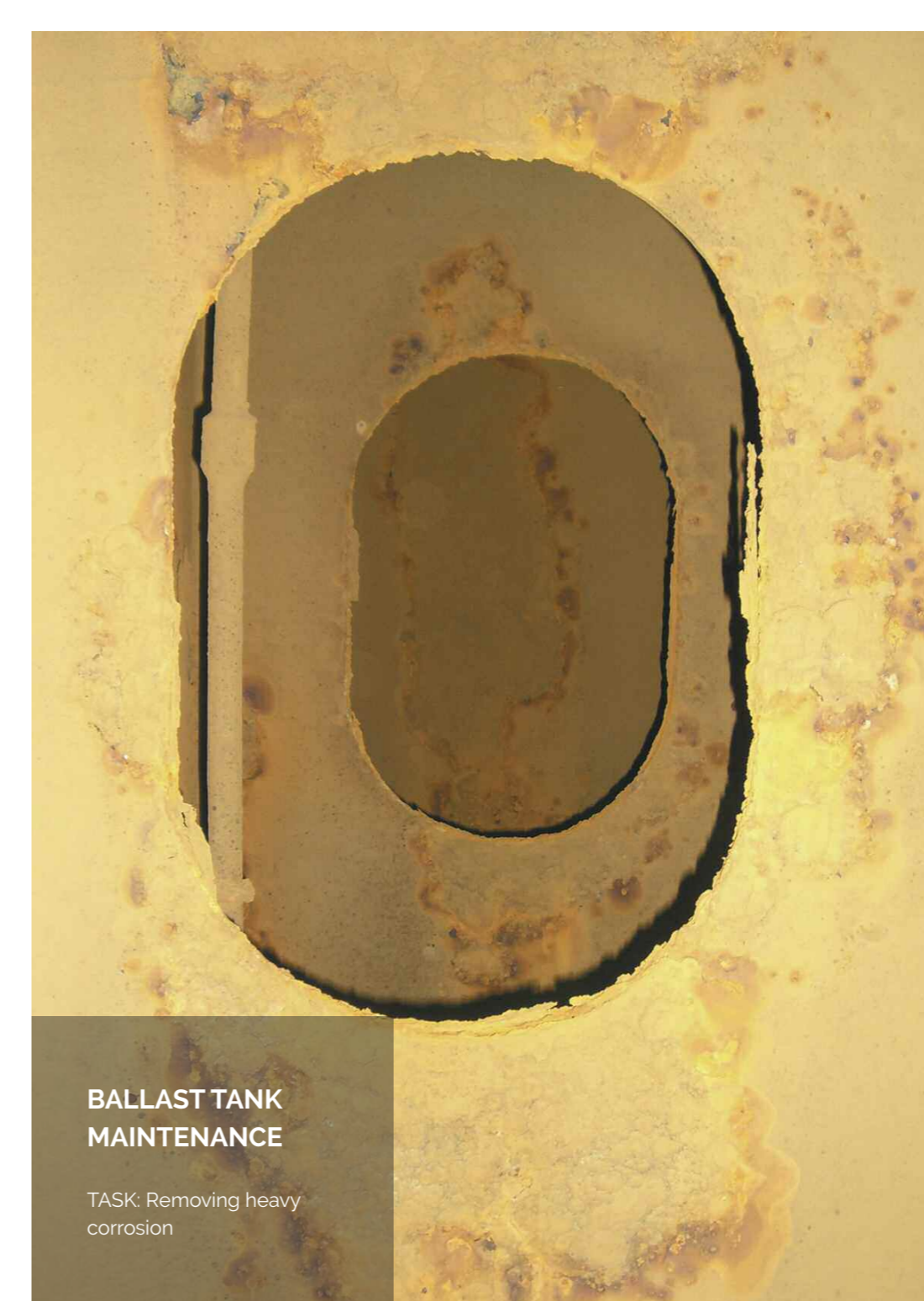
OIL TANKER

TASK: Coating and corrosion removal



### DECK SPOT REPAIR

TASK: Removing old coatings and soluble salts whilst at the same time profiling and feathering the repaired surface for repainting



### BALLAST TANK MAINTENANCE

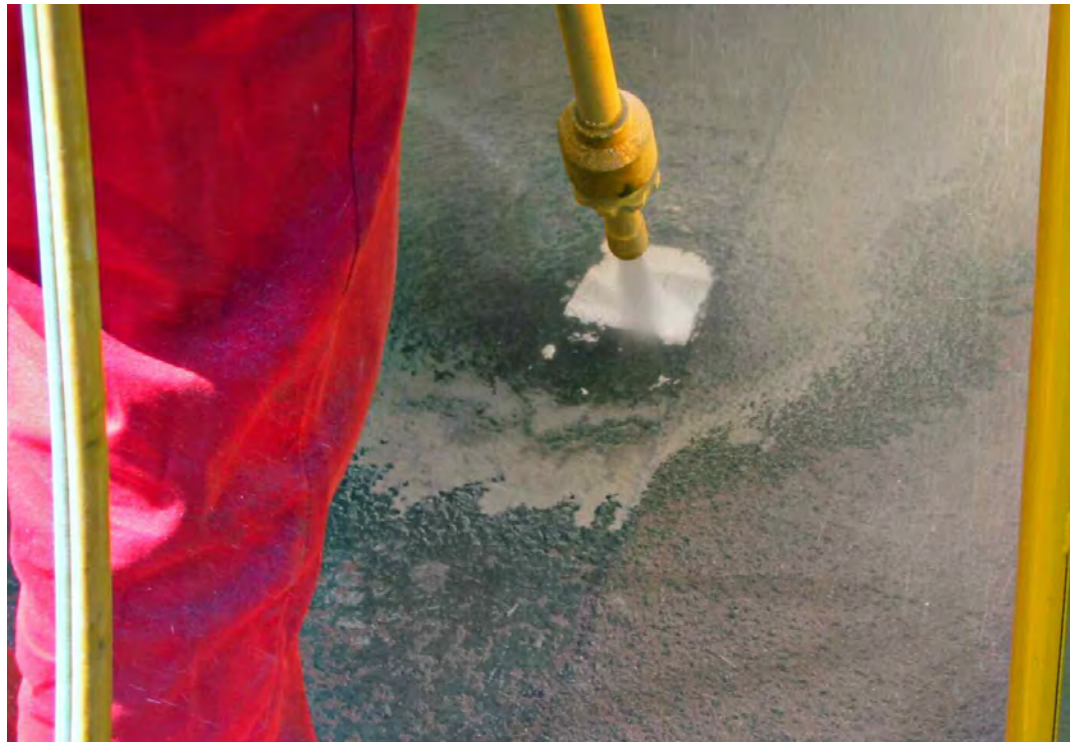
TASK: Removing heavy corrosion



### HULL MAINTENANCE

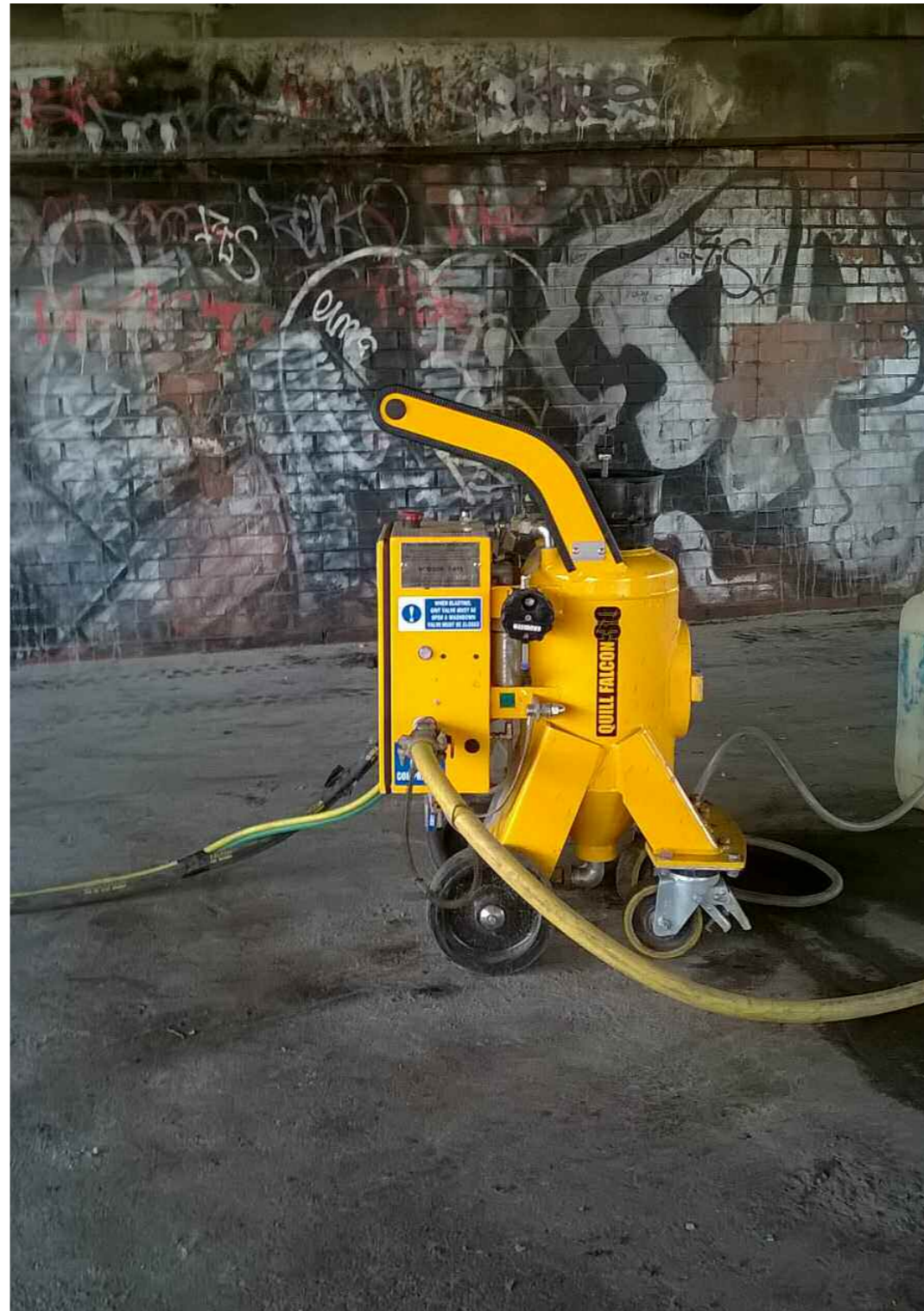
TASK: Removing old coatings and corrosion whilst at the same time profiling the repaired surface for repainting





### WHITE LINE REMOVAL FROM HIGHWAYS

TASK: Removing white thermoplastic  
paint without scorching or scarring  
the road surface



### GRAFFITI REMOVAL

TASK: Removing paint  
without damaging the  
brickwork



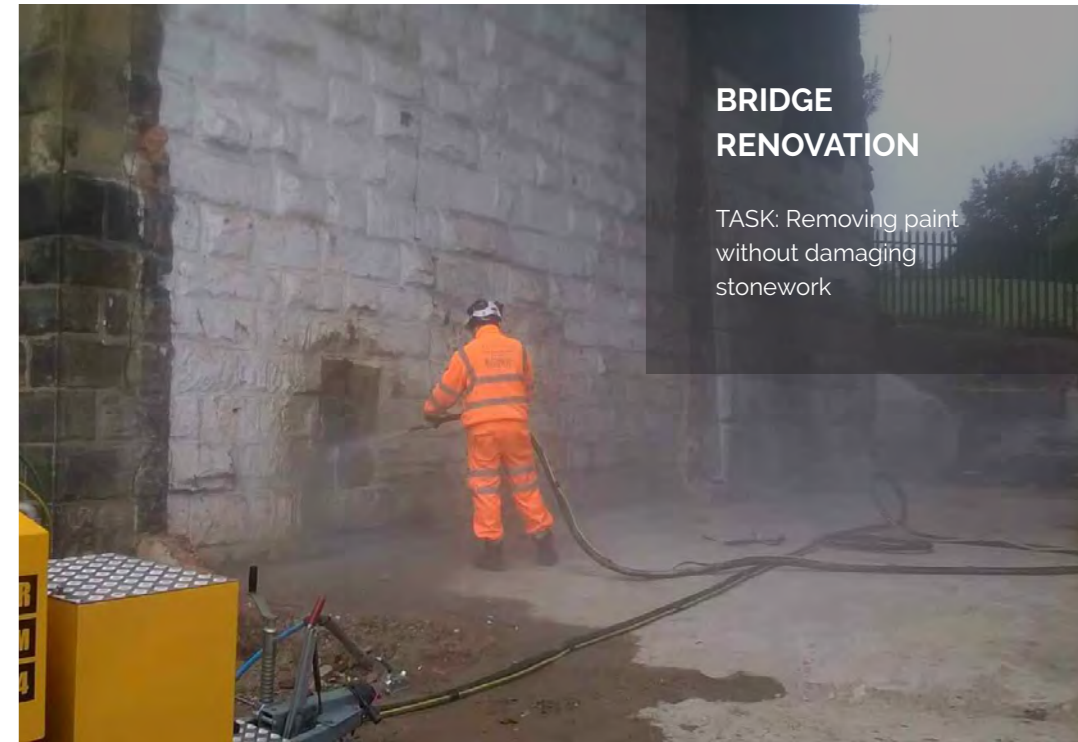
**BRIDGE  
INSPECTION**

TASK: Concrete  
cutting and removing  
soluble salts for bridge  
rebar inspection



**CAR PARK  
RENOVATION**

TASK: Removing white  
thermoplastic paint  
without damaging  
brickwork



**BRIDGE  
RENOVATION**

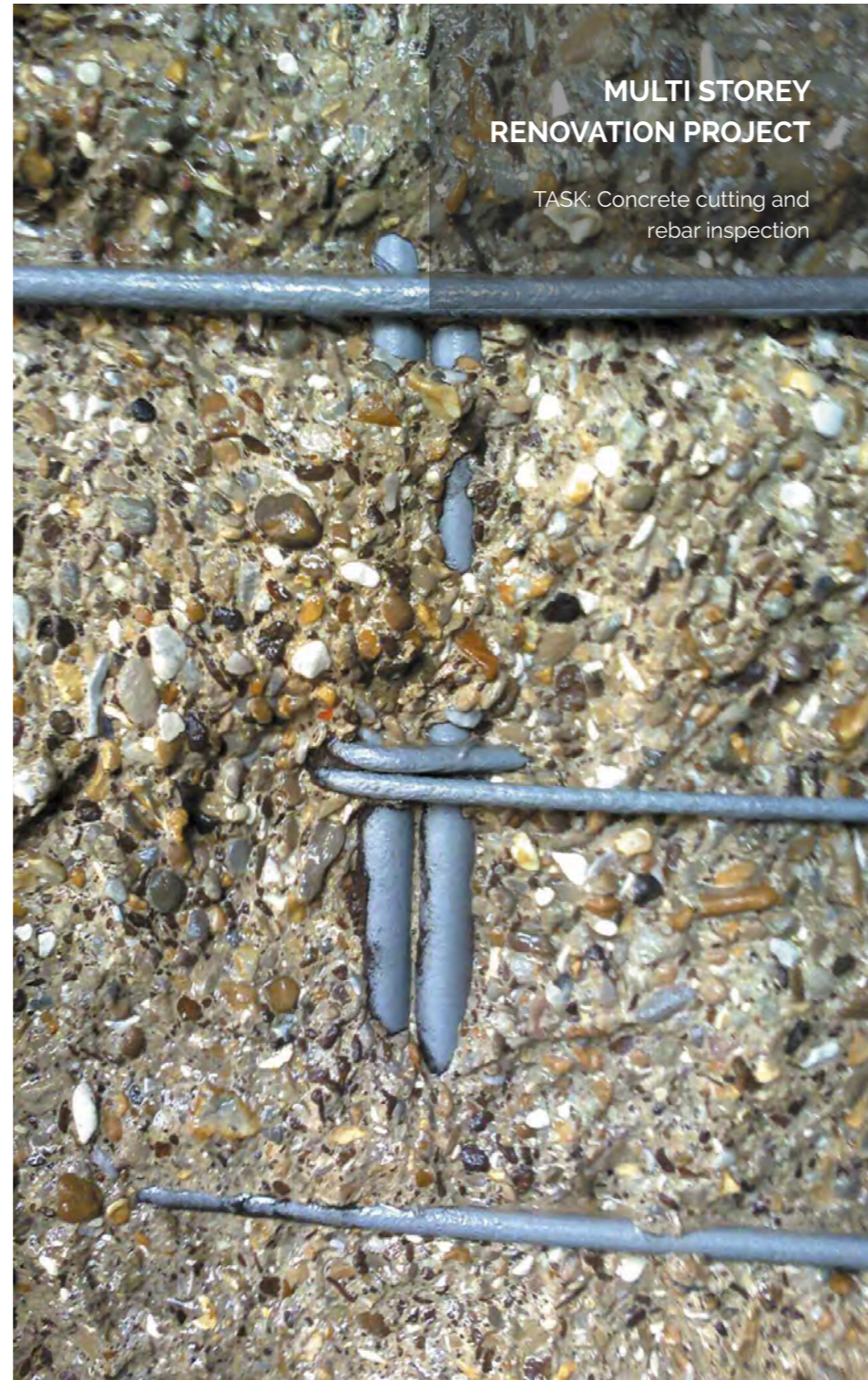
TASK: Removing paint  
without damaging  
stonework





**MULTI STOREY  
RENOVATION PROJECT**

TASK: Concrete cutting and  
rebar inspection



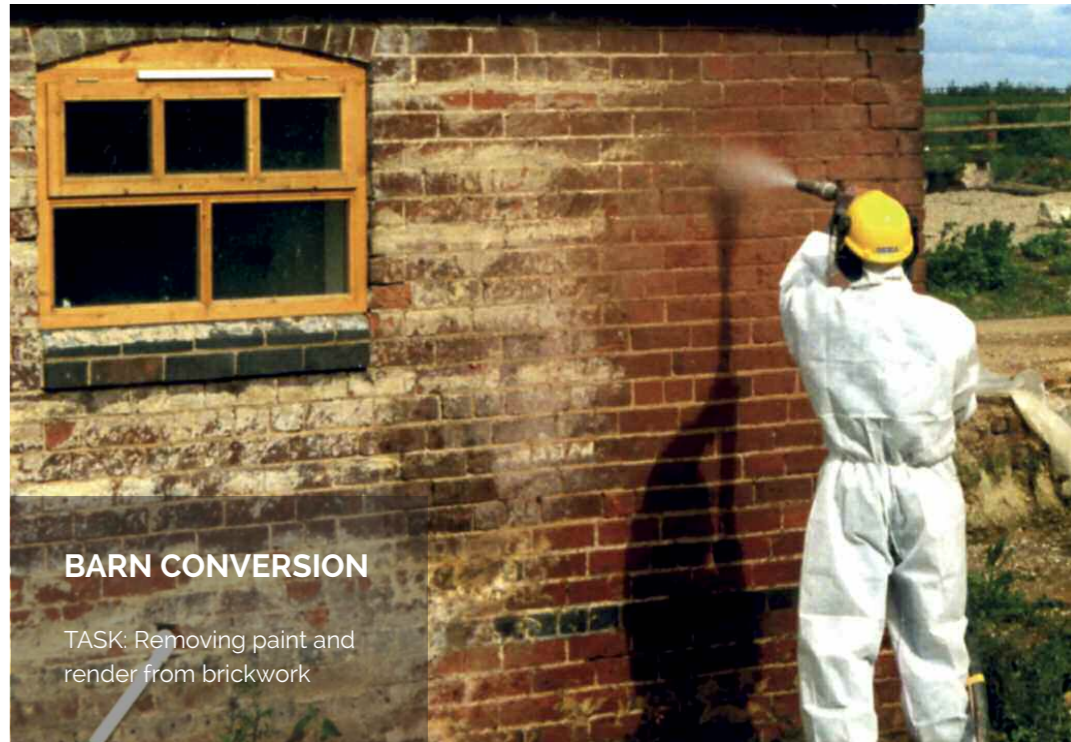
**FIRE DAMAGED  
PROPERTY**

TASK: Removing soot  
from brickwork



**BARN CONVERSION**

TASK: Removing paint and  
render from brickwork



**DOMESTIC  
PROPERTY**

TASK: Removing  
render from stonework





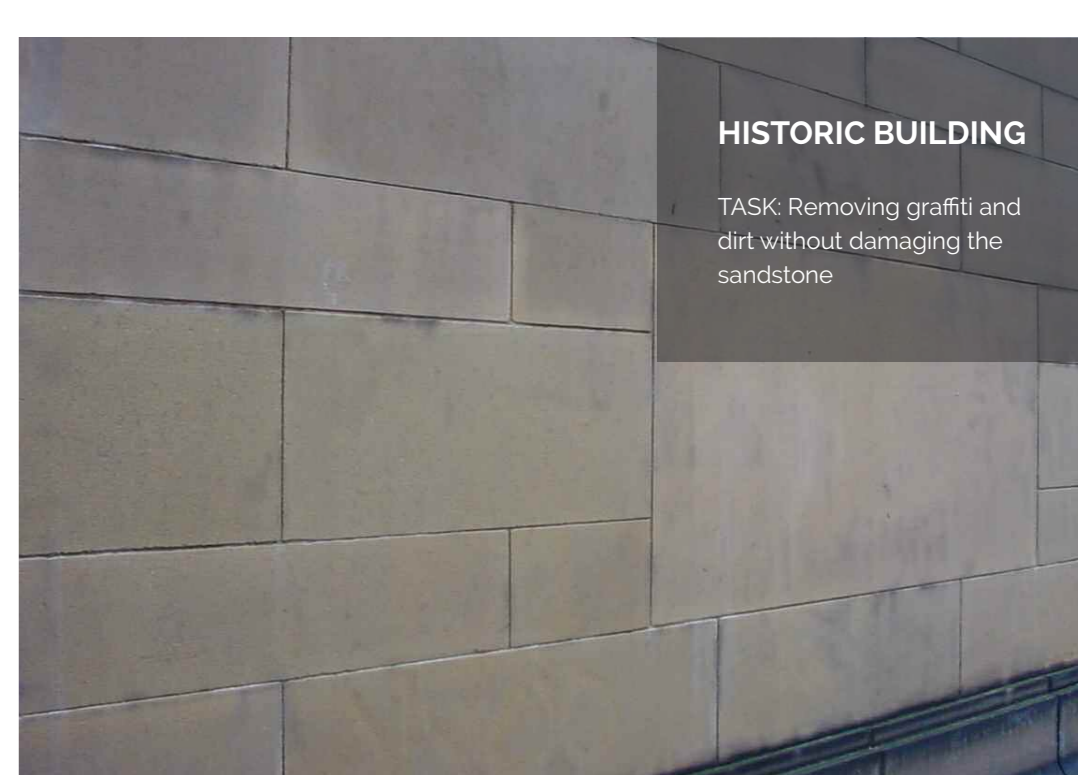
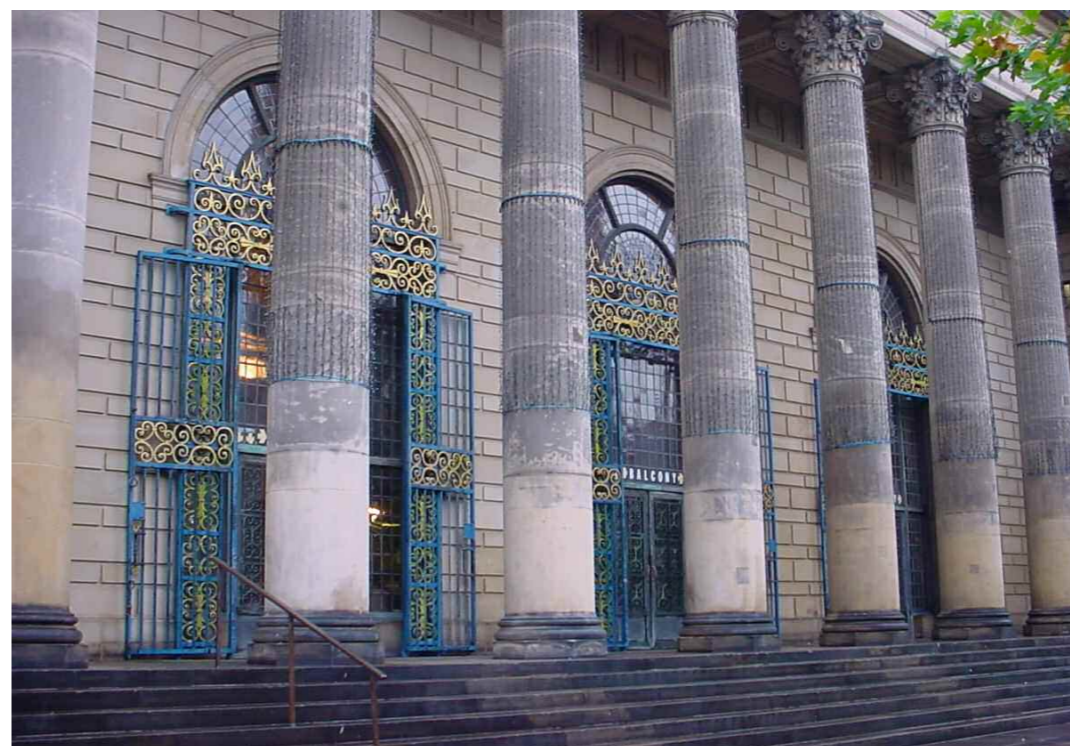
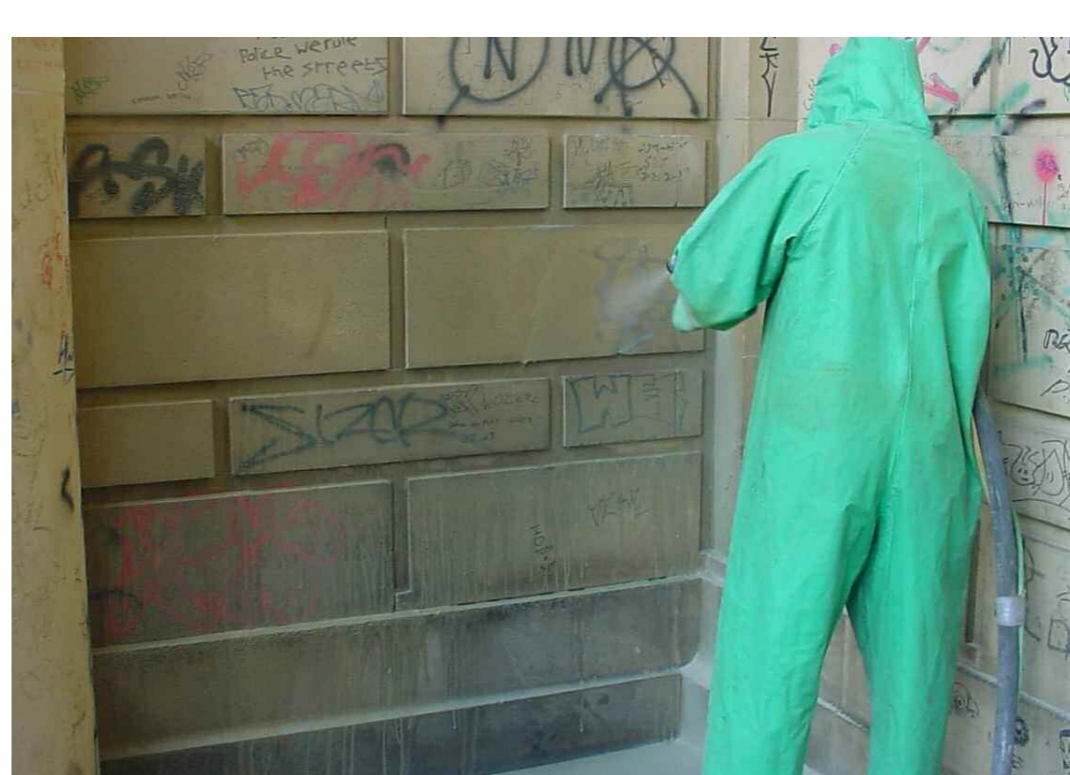
**GLASS WINDOW**

TASK: Etching glass



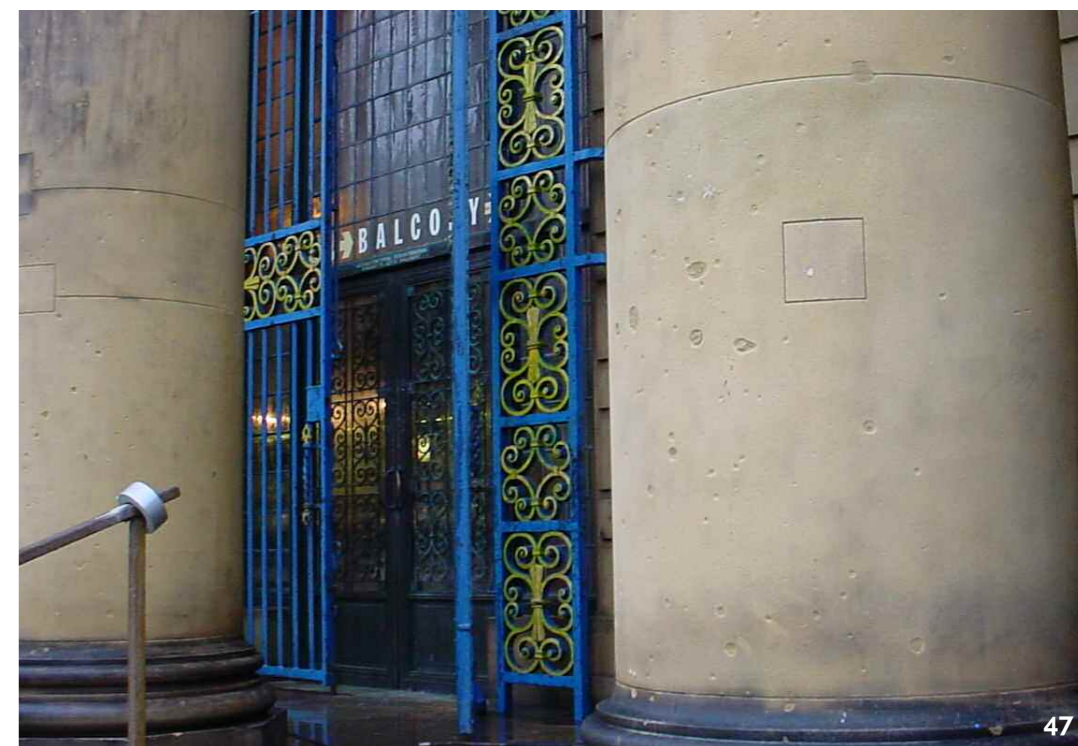
**FACTORY RENOVATION**

TASK: Removing paint without damaging brickwork



**HISTORIC BUILDING**

TASK: Removing graffiti and dirt without damaging the sandstone





## DOCKSIDE

TASK: Etching  
concrete channel



## BEFORE

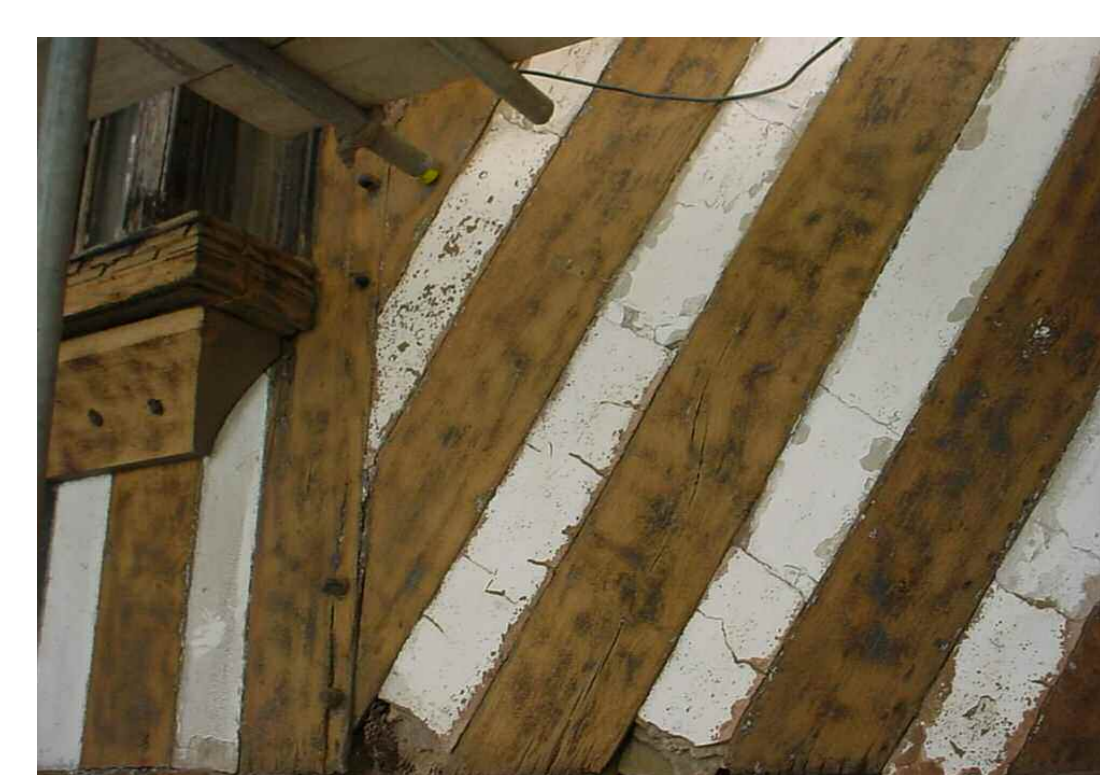
Concrete channel before



## AFTER

Concrete channel with  
exposed aggregate





**GRADE II LISTED BUILDING**

TASK: Removing paint and tar without damaging wooden beams



**GRADE II LISTED COTTAGE**

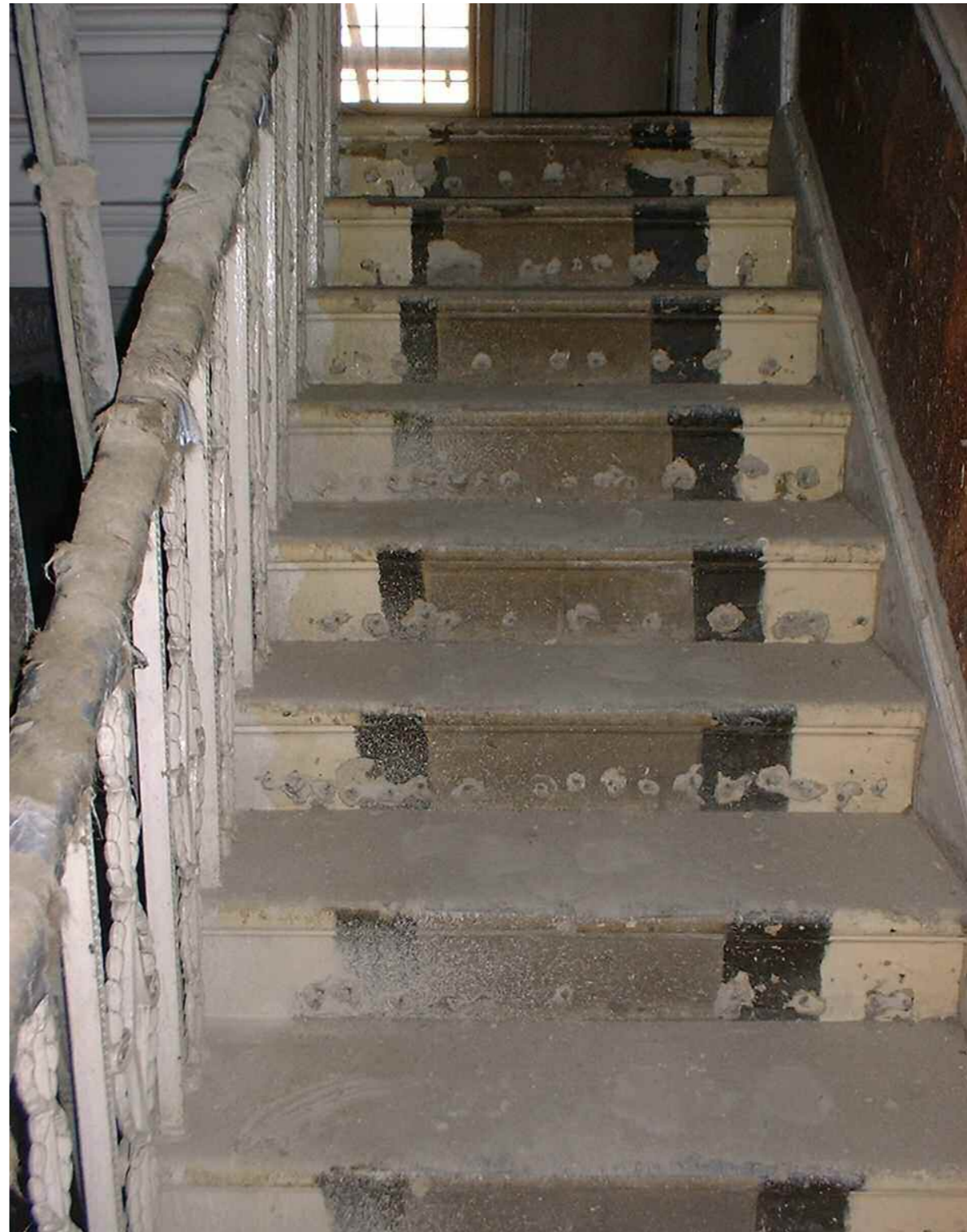
TASK: Removing old plaster and paint without damaging stonework





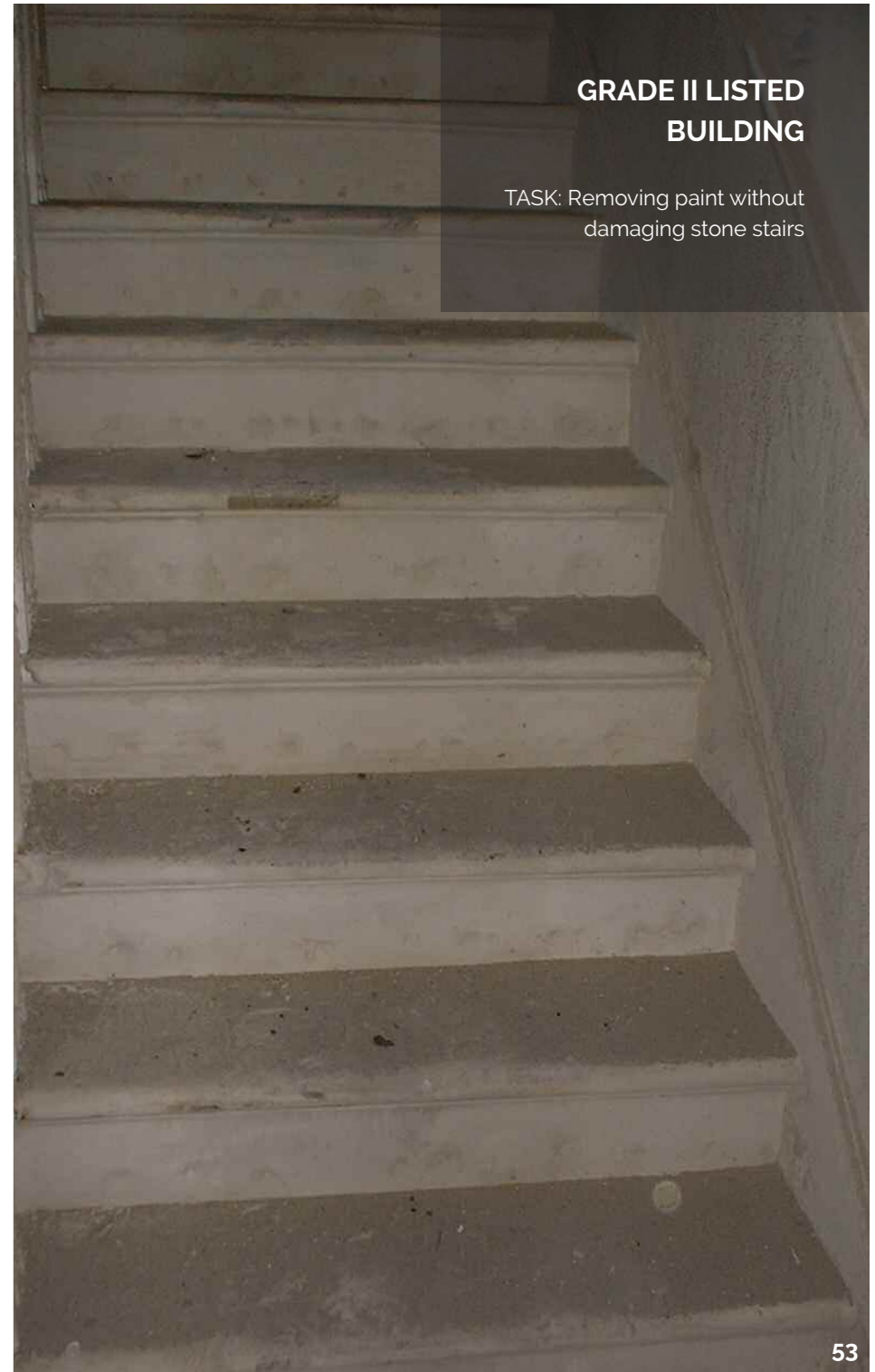
**VICTORIAN FIREPLACE**

TASK: Removing several layers of paint and corrosion



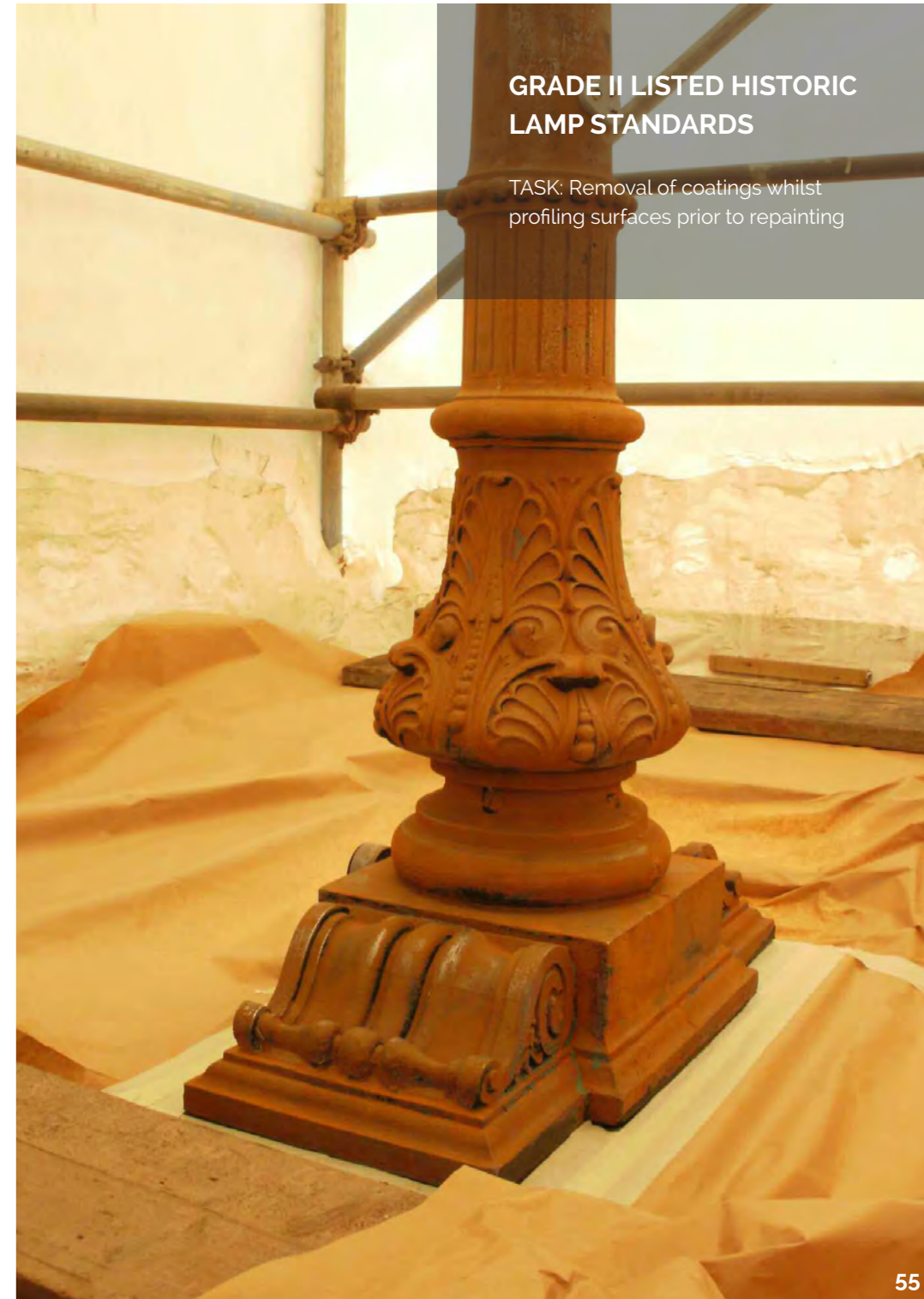
**GRADE II LISTED BUILDING**

TASK: Removing paint without damaging stone stairs



**GRADE II LISTED HISTORIC  
LAMP STANDARDS**

TASK: Removal of coatings whilst  
profiling surfaces prior to repainting



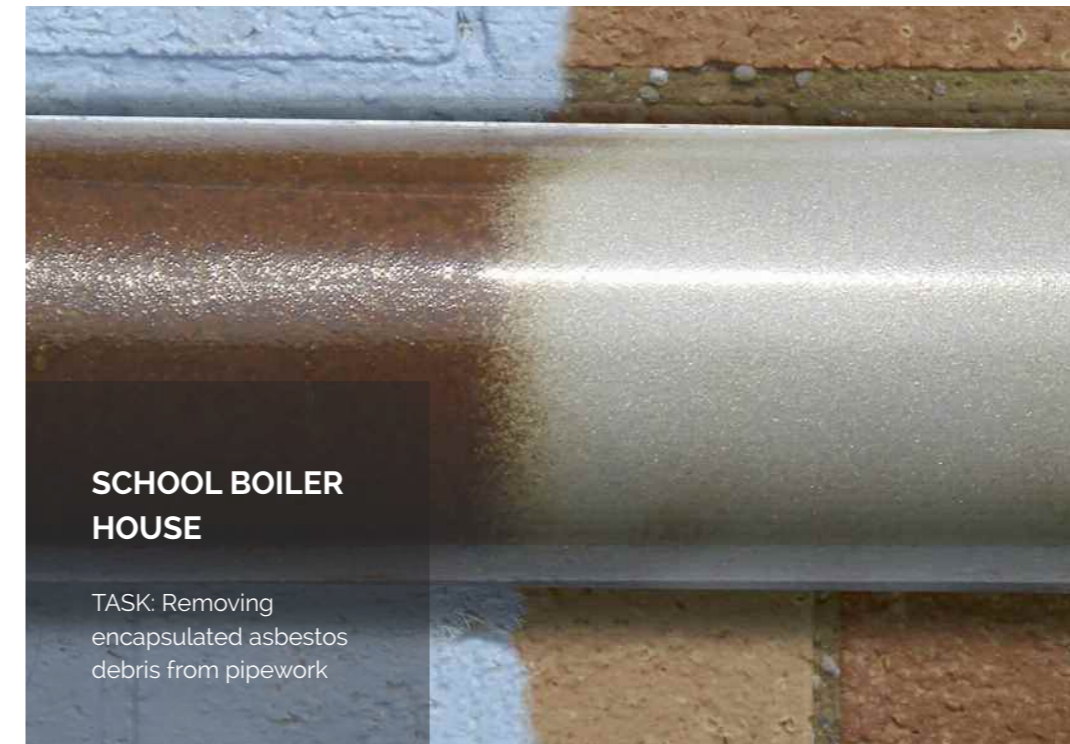
**MULTI STOREY  
RENOVATION PROJECT**

TASK: Removing asbestos  
limpet residue



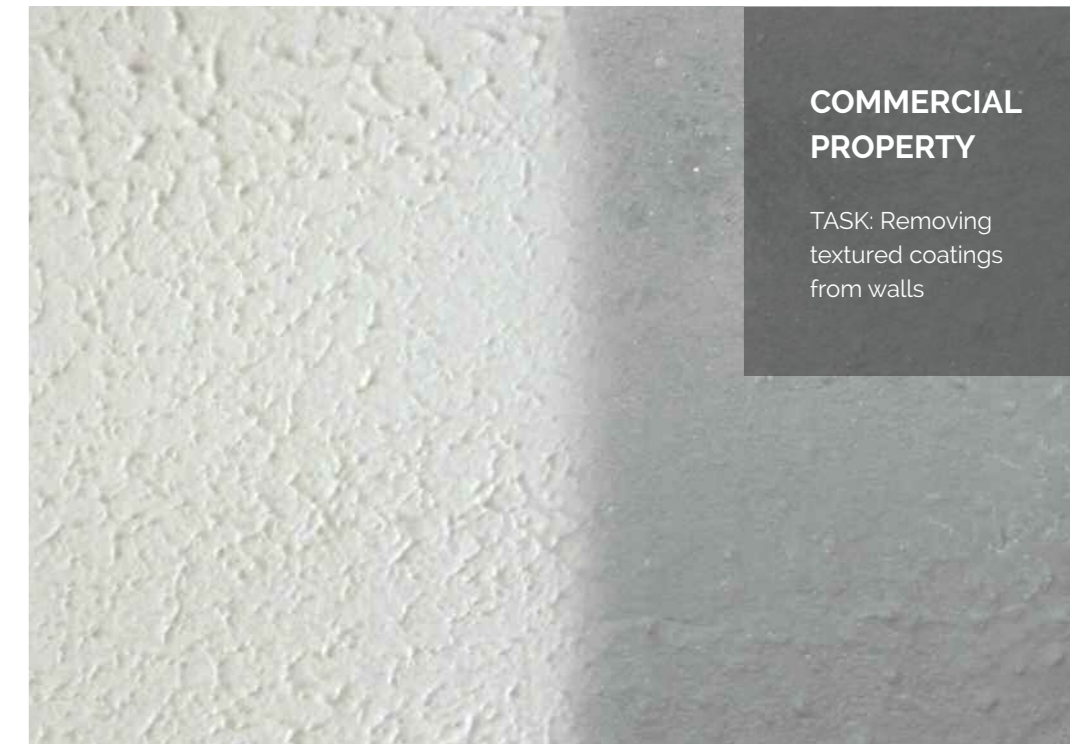
**SCHOOL BOILER  
HOUSE**

TASK: Removing  
encapsulated asbestos  
debris from pipework



**COMMERCIAL  
PROPERTY**

TASK: Removing  
textured coatings  
from walls



**COMMERCIAL  
PROPERTY**

TASK: Removing  
floor tile adhesive



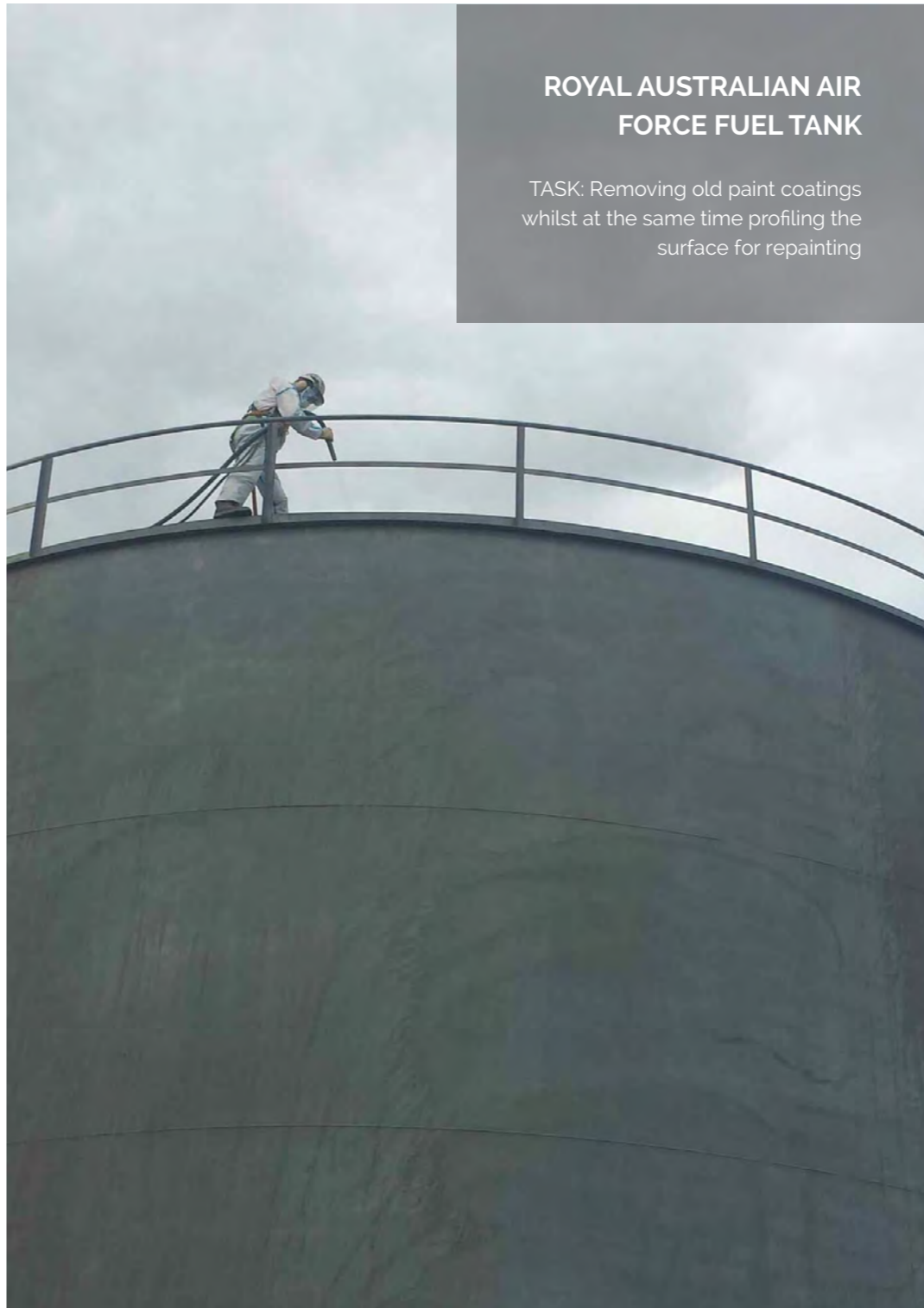
**SCHOOL BOILER HOUSE**

TASK: Removing several coats of ET150



**ROYAL AUSTRALIAN AIR FORCE FUEL TANK**

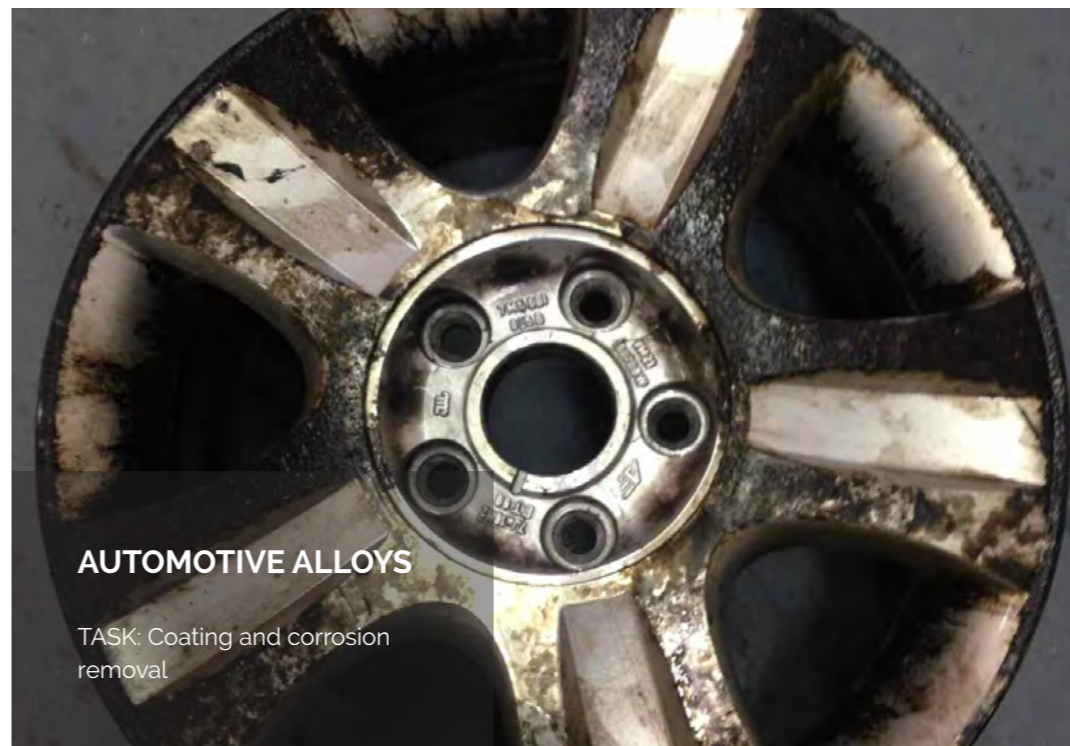
TASK: Removing old paint coatings whilst at the same time profiling the surface for repainting





**LORRY CHASSIS**

TASK: Removing paint and corrosion



**AUTOMOTIVE ALLOYS**

TASK: Coating and corrosion removal



**VW CAMPERVAN RESTORATION**

TASK: Removing paint coatings from bodywork



# QUILL FALCON CYCLONE 30

The Quill Falcon Cyclone 30 has been engineered to be lighter and more manoeuvrable than a Quill Falcon 60. It has been specifically designed to hold one full bag of garnet and has a slightly larger cabinet making it easier to service than the smaller Quill Falcon 15. Available with ATEX wheels for those working in explosive environments or standard wheels for those watching their weight, the Quill Falcon Cyclone 30 is proving to be a cross industry favourite.

Perfect for those small fiddly jobs in confined areas and particularly good at delicate projects where the pressure can be turned right down to less than 20psi. Alternatively it can be turned up to 80psi when you want the power and performance of a larger Quill Falcon Cyclone but in a smaller package.

## DIMENSIONS

Capacity:	19.5 litres
Height:	830mm
Width:	520mm
Depth:	650mm
Unladen Weight:	67.2kg
Laden Weight:	104kg (garnet)

## BLAST MEDIA

Number of 25kg bags to fill vessel	
Garnet:	1 bag
Iron Silicate:	1 bag
Glass:	¾ bag

## SPECIFICATIONS

Water Pressure & Flow:	Standard tap pressure & flow
Water Consumption:	40 – 80ml per minute
Grit Type:	Standard particle blast media
Grit Consumption:	0.5 – 1.1kg per minute
Grit Refill:	Up to 45 mins between refills
Air Supply:	40 – 90cfm
Air Supply Hose:	¾ inch
Blast Hose Size:	¾ inch
Blast Hose Max Length:	50m
Blasting Pressure:	20 – 80 psi



# QUILL FALCON CYCLONE 60

The Quill Falcon Cyclone 60 is possibly the most versatile of the Quill Falcon Systems as it is powerful, easily portable and blasts for up to 3 hours before it requires refilling.

The Quill Falcon Cyclone 60 is popular with the offshore industry where it is flown across the globe to carry out surface preparation on helipads, completions and oil and gas tubulars, spot repairs for maintenance programmes and coating removal as part of NDT preparation. The Quill Falcon Cyclone 60 System is also widely used by the shipping industry during voyages to carry out maintenance work as ships transport cargo around the worlds waters.

## DIMENSIONS

Capacity:	58 litres
Height:	1070mm
Width:	620mm
Depth:	730mm
Unladen Weight:	138kg
Laden Weight:	269kg (garnet)

## BLAST MEDIA

Number of 25kg bags to fill vessel	
Garnet:	4 bags
Iron Silicate:	3 bags
Glass:	2 bags

## SPECIFICATIONS

Water Pressure & Flow:	Standard tap pressure & flow
Water Consumption:	100 – 150ml per minute
Grit Type:	Standard particle blast media
Grit Consumption:	0.6 – 1kg per minute
Grit Refill:	Up to 3 hrs between refills
Air Supply:	90 to 250cfm
Air Supply Hose:	¾ inch or 2 inch
Blast Hose Size:	1 inch
Blast Hose Max Length:	100m
Blasting Pressure:	20 – 100psi





# QUILL FALCON CYCLONE 120



The Quill Falcon Cyclone 120 is possibly the most flexible of the Quill Falcon range. The Quill Falcon Cyclone 120 has the ability to be more powerful than the Quill Falcon 60 yet is more portable than the Quill Falcon 200 when full of water and blast media.

The Quill Falcon 120 therefore lends itself perfectly to both large and small projects alike giving customers the flexibility to handle a wide variety of jobs. With a vessel capacity of 121 litres, blast media refill times are extended up to 8 hours thereby making projects that little bit faster and easier.

#### DIMENSIONS

Capacity:	121 litres
Height:	1270mm
Width:	630mm
Depth:	860mm
Unladen Weight:	165kg
Laden Weight:	436kg (garnet)

#### BLAST MEDIA

Number of 25kg bags to fill vessel	
Garnet:	8 bags
Iron Silicate:	7 bags
Glass:	5 bags

#### SPECIFICATIONS

Water Pressure & Flow:	Standard tap pressure & flow
Water Consumption:	100 - 200ml per minute
Grit Type:	Standard particle blast media
Grit Consumption:	0.4 - 0.7kg per minute
Grit Refill:	Up to 8 hours between refills
Air Supply:	175 - 400cfm
Air Supply Hose:	¾ or 2inch
Blast Hose Size:	1 inch
Blast Hose Max Length:	up to 250m
Blasting Pressure:	20 - 120psi

# QUILL FALCON CYCLONE 200

The Quill Falcon Cyclone 200 is the most powerful of the Quill Falcon Systems due to its size and ability to be used with up to a 600cfm compressor making for effortless blasting in demanding conditions. The extra-large 230 litre vessel capacity means the Quill Falcon Cyclone 200 can hold more blasting media which therefore allows a longer amount of time between refills making the system ideally suited for blasting large areas on big projects.

The Quill Falcon Cyclone 200 is used throughout the worlds ship yards for large projects on Floating, Production, Storage and offloading vessels (FPSO's), Very Large Crude Carriers (VLCC's), Ultra Large Crude Carriers (ULCC's) and Warships.

#### DIMENSIONS

Capacity:	230 litres
Height:	1280mm
Width:	670mm
Depth:	1020mm
Unladen Weight:	209kg
Laden Weight:	584kg (garnet)

#### BLAST MEDIA

Number of 25kg bags to fill vessel	
Garnet:	15 bags
Iron Silicate:	11 bags
Glass:	9 bags

#### SPECIFICATIONS

Water Pressure & Flow:	Standard tap pressure & flow
Water Consumption:	150 - 250ml per minute
Grit Type:	Standard particle blast media
Grit Consumption:	0.3 - 0.8 kg per minute
Grit Refill:	Up to 18 hours between refills
Air Supply:	250 - 400cfm
Air Supply Hose:	¾ or 2inch
Blast Hose Size:	1 inch or 1¼ inch
Blast Hose Max Length:	up to 250m
Blasting Pressure:	20 - 120psi



# QUILL FALCON CYCLONE 60T

The Quill Falcon Cyclone 60 Trailer is the most convenient of the Quill Falcon range as it comprises of a Quill Falcon Cyclone 60, a 115 litre water tank and a 90 or 140cfm compressor. In essence it provides our customers with everything they need to start blasting almost immediately.

The Quill Falcon Cyclone 60 Trailer takes away the hassle and worry of being held up on site waiting for plant hire companies to deliver compressors and of potentially unreliable water supplies.

## DIMENSIONS

Capacity:	58 litres
Height:	1530mm
Width:	2000mm
Depth:	3050mm
Unladen Weight:	1026kg
Laden Weight:	1240kg (garnet)

## BLAST MEDIA

Number of 25kg bags to fill vessel	
Garnet:	4 bags
Iron Silicate:	3 bags
Glass:	2 bags

## SPECIFICATIONS

Water Tank:	115 litres
Water Consumption:	100 – 150ml per minute
Grit Type:	Standard particle blast media
Grit Consumption:	0.6 – 1kg per minute
Grit Refill:	Up to 3 hrs between refills
Air Supply:	90 or 140cfm
Air Supply Hose:	¾ inch
Blast Hose Size:	1 inch
Blast Hose Max Length:	80m
Blasting Pressure:	20 – 80psi
Compressor Fuel Tank:	50 litres

# QUILL FALCON CYCLONE 120T

The Quill Falcon Cyclone 120 Trailer is both convenient and powerful. It comprises of a Quill Falcon Cyclone 120, a 115 litre water tank and a 175cfm compressor providing customers with everything they need to start blasting almost immediately. The Quill Falcon Cyclone 120 Trailer is extremely popular with many of our highways customers who are often working in difficult and remote locations where access to a water supply is often limited.

The Quill Falcon Cyclone 120 Trailer takes away the hassle and worry of being held up on site waiting for plant hire companies to deliver compressors and of potentially unreliable water supplies.

## DIMENSIONS

Capacity:	121 litres
Height:	1750mm
Width:	1800mm
Depth:	4300mm
Unladen Weight:	1580kg
Laden Weight:	1920kg (garnet)

## BLAST MEDIA

Number of 25kg bags to fill vessel	
Garnet:	8 bags
Iron Silicate:	7 bags
Glass:	5 bags

## SPECIFICATIONS

Water Tank:	115 litres
Water Consumption:	100 – 200ml per minute
Grit Type:	Standard particle blast media
Grit Consumption:	0.4 – 0.7kg per minute
Grit Refill:	Up to 8 hrs between refills
Air Supply:	177cfm
Air Supply Hose:	2 inch
Blast Hose Size:	1 inch
Blast Hose Max Length:	100m
Blasting Pressure:	20 – 120 psi
Compressor Fuel Tank:	50 litres



# QUILL FALCON 120 CYCLONE COMPLETE

The NEW Quill Falcon 120 Cyclone Complete Trailer is designed for asbestos removal contractors or those customers working in hazardous environments where they have a need for combined blasting and air fed breathing apparatus. By combining blasting and breathing apparatus together on one trailer it means that customers can save space on site and save money and time too on not having to hire separate compressors and air breathing apparatus.

The Cyclone Complete is manufactured to compressed air breathing standard EN12021 and comprises of a Quill Falcon Cyclone 120 capable of removing up to 20m<sup>2</sup> of coatings per hour, a 177cfm compressor providing a reliable source of high purity air for up to 4 operatives, airline breathing apparatus including Scott Ras masks and airline breathing harnesses, reserve air supply in the unlikely event of main supply failure, a mobile control panel for monitoring individual operatives air supply for use outside the enclosure and a large 115 litre water tank all mounted on a robust towable ball hitch trailer.

## DIMENSIONS

Capacity:	121 litres
Height:	1720mm
Width:	1810mm
Depth:	4300mm
Unladen Weight:	1700kg
Laden Weight:	2100kg (garnet)

## BLAST MEDIA

Number of 25kg bags to fill vessel	
Garnet:	8 bags
Iron Silicate:	7 bags
Glass:	5 bags

## SPECIFICATIONS

Water Tank:	115 litres
Water Consumption:	100 – 200ml per minute
Grit Type:	Standard particle blast media
Grit Consumption:	0.4 – 0.7kg per minute
Grit Refill:	Up to 8 hrs between refills
Air Supply:	177cfm
Air Supply Hose:	2 inch
Blast Hose Size:	1 inch
Blast Hose Max Length:	80m
Blasting Pressure:	50 – 120 psi
Compressor Fuel Tank:	60 litres



# COMPARE CYCLONE SYSTEMS



	30	60	120	200
<b>Dimensions</b>				
Capacity	19.5 litres	58 litres	121 litres	230 litres
Height	830mm	1070mm	1270mm	1280mm
Width	520mm	620mm	630mm	670mm
Depth	650mm	730mm	860mm	1020mm
Unladen Weight	67.2kg	138kg	165kg	209kg
Laden Weight	104kg (garnet)	269kg (garnet)	436kg (garnet)	584kg (garnet)
<b>Blast Media</b>				
No of 25kg bags to fill vessel				
Garnet	1 bag	4 bags	8 bags	15 bags
Iron Silicate	1 bag	3 bags	7 bags	11 bags
Glass	¾ bag	2 bags	5 bags	9 bags
<b>Specifications</b>				
Water Pressure & Flow	Std tap pressure & flow	Std tap pressure & flow	Std tap pressure & flow	Std tap pressure & flow
Water Consumption	40 – 80ml per minute	100 – 150ml per minute	100 – 200ml per minute	150 – 250ml per minute
Grit Type	Std particle blast media	Std particle blast media	Std particle blast media	Std particle blast media
Grit Consumption	0.5 - 1.1kg per minute	0.6 – 1kg per minute	0.4 – 0.7kg per minute	0.3 – 0.8 kg per minute
Grit Refill	Up to 45 mins between refills	Up to 3 hrs between refills	Up to 8 hours between refills	Up to 18 hours between refills
Air Supply	40 - 90cfm	90 to 250cfm	175 – 400cfm	250 – 400cfm
Air Supply Hose	¾ inch	¾ inch or 2 inch	¾ inch or 2 inch	¾ inch or 2 inch
Blast Hose Size	¾ inch	1 inch	1 inch	1 inch or 1¼ inch
Blast Hose Max Length	50m	100m	up to 250m	up to 250m
Blasting Pressure	20 - 80psi	20 – 100psi	20 – 120psi	20 – 120psi



	60T	120T	120 COMPLETE
<b>Dimensions</b>			
Capacity	58 litres	121 litres	121 litres
Height	1530mm	1750mm	1720mm
Width	2000mm	1800mm	1810mm
Depth	3050mm	4300mm	4300mm
Unladen Weight	1026kg	1580kg	1700kg
Laden Weight	1240kg (garnet)	1920kg (garnet)	2100kg (garnet)
<b>Blast Media</b>			
No of 25kg bags to fill vessel			
Garnet	4 bags	8 bags	8 bags
Iron Silicate	3 bags	7 bags	7 bags
Glass	2 bags	5 bags	5 bags
<b>Specifications</b>			
Water Tank	115 litres	115 litres	115 litres
Water Consumption	100 – 150ml per minute	100 – 200ml per minute	100 – 200ml per minute
Grit Type	Std particle blast media	Std particle blast media	Std particle blast media
Grit Consumption	0.6 – 1kg per minute	0.4 – 0.7kg per minute	0.4 – 0.7kg per minute
Grit Refill	Up to 3 hrs between refills	Up to 8 hrs between refills	Up to 8 hrs between refills
Air Supply	90 or 140cfm	177cfm	177cfm
Air Supply Hose	¾ inch	2 inch	2 inch
Blast Hose Size	1 inch	1 inch	1 inch
Blast Hose Max Length	80m	100m	80m
Blasting Pressure	20 - 80psi	20 - 120psi	50 – 120 psi
Compressor Fuel Tank	50 litres	50 litres	60 litres

# BLAST MEDIA.

## What type of blast media should you use with the Quill Falcon Cyclone?

The Quill Falcon Dustless Kwikblast System is capable of profiling a wide range of surfaces to between 60-120 microns and achieving SA 2½, HB 2½, SB 2½, NACE VIS 9, WAB 6/10. The depth of the profile can be altered by using different volumes of air and different types of blast media such as garnet, iron silicate, glass and sodium bicarbonate.

As surfaces and conditions will vary, it is essential that each blasting project is assessed and the correct blasting media is obtained before blasting commences. Please contact Quill Falcon on +44 (0) 1332 864 664 to discuss the correct blasting media required for your project.

## FINE WORK

### Sodium Bicarbonate

Delicate stone work, plastics, glass, metals - aluminium, brass, bronze, copper and polished wood



## MEDIUM WORK

### Glass

Delicate brick work, concrete render, wood, dense stone work and graffiti from delicate surfaces



## INDUSTRIAL WORK

### Garnet

Heavy corrosion, bitumen, graffiti removal concrete demolition and cleaning, artex and limpet residue removal



From blast media and compressor hire to airline breathing apparatus including air breathing masks, tear off mask strips and airline breathing harnesses we stock it all. For more information please call the Quill International Group on +44 (0) 1332 864664 or email [sales@quillinternational.com](mailto:sales@quillinternational.com)



## DID YOU KNOW?

The Quill International Group is an **ISO 9001:2015** accredited group of companies. It is a global brand player with on going successful operations on six of the world's seven continents in over 30 different countries.

Over the past quarter of a century we have designed, developed and taken to market unique infection control healthcare products, high quality industrial cleaning detergents and pressure washers, revolutionary precision dustless blasting systems, high performance commercial laundry powders and innovative 3D printing post processing solutions.

# HOW TO HIRE OR BUY A QUILL FALCON CYCLONE SYSTEM.

You can hire or buy direct from Quill Falcon on **+44 (0) 1332 864664**

You can email your enquiry direct to **sales@quillinternational.com**

If you are in the UK and require a free demonstration without obligation please call **+44 (0) 1332 864664** to arrange a meeting

If you are an overseas customer please call our head office on **+44 (0) 1332 864664** or alternatively visit **www.quillfalcon.com** to find your nearest Quill Falcon agent

\*Weights and dimensions are based on current models in manufacture. Cyclone Trailer System laden weight - full vessel of grit and water and full tank of diesel. Consumption rates based on average dosing settings. Water consumption taken from water used at nozzle. Up to 1 litre of water per minute will be required to keep vessel pressurised. Grit and water consumption may vary according to size of compressor, dosing valve setting, size of nozzle and type of blast media used. Falcon 30 weighed with standard (non ATEX) wheels.