

SO, WHAT DO YOU KNOW



This edition is produced by:



PERMASTEELISA

Battersea Power Station Phase 3 Bulletin

Permasteelisa Group is a leading global contractor in the design, engineering, project management, manufacture and installation of curtain wall and advanced façade technologies. One group, three brands delivering bespoke and advanced technical solutions

The Shard

20 Fenchurch street



Disney opera hall

22 Bishopgate



Eight spruce street

Bilbao Guggenheim museum



Bloomberg

Sidney opera house



Battersea Power Station Phase 3 Bulletin



Permasteelisa Quality Commitment.

- From tender to installation of a Custom Architectural solution: Customer satisfaction is at the heart of everything we do. Delivery of the highest value to our business partners is our Quality Commitment. We strive to continuously improve in order to provide the best service and product in the marketplace.
- Permasteelisa processes: design, engineering, production and installation of prefabricated architectural envelopes (curtain walls, roofs, steel structures) are **ISO 9001 registered**.

Health & Safety

We are committed to preventing on-the-job injuries. Our **Zero-Injury Commitment** reflects our belief that everyone should be able to go home safe to their families after a day's work. For this reason, Permasteelisa has adopted the highest safety standards, and is registered to the **International Occupational Health and Safety Management System OHSAS 18001**.

Environment

We understand the value of proactive environmental management. Respect for our Environment is our responsibility, but it also makes good business sense. Waste reduction saves time and money, not only in terms of disposal, but production in the first place.

To organize our approach to Environmental management, Permasteelisa is registered to the **International Environmental Management System ISO 14001**.

Battersea Power Station Phase 3 Bulletin

Permasteelisa designed, manufactured and installed the main façade on both PP1 and PP2, following the 3d design by Frank Gehry. We are now completing the hoist infill panels on both buildings and installing the 3D steel façade for the podium.



Hoist infill on PP1



Podium façade and canopies on PP1



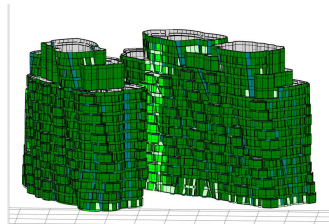
Battersea Power Station Phase 3 Bulletin

New for Battersea power station

On Battersea 3a We moved to a paperless QA-QC system, using tablets and mobile devices. This reduced by 95% the amount of prints done on site compared to a similar size project completed 2 years ago. The new IT system allows a real time connection between site and design for site works instructions and internal RFI/comments.

New for 2021

We are creating a system for site tracking materials using our 3d model.



H&S

We periodically promote TBT based on our previous H&S bulletins from other sites. The aim is to make sure all operatives are aware of risks and dangerous events happened in the past as these may happen again.



Environmental

All steel racks are dismantled and sent back to the manufacturing plants optimizing the return loads. Timber used for racks is removed and fully recycled through a local company. The plastic wrap is fully recyclable and we have a compactor on site to reduce the sizes of the plastic waste

