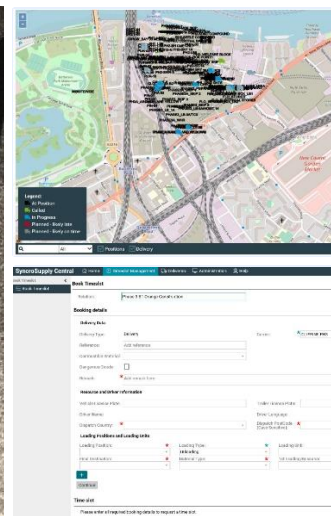
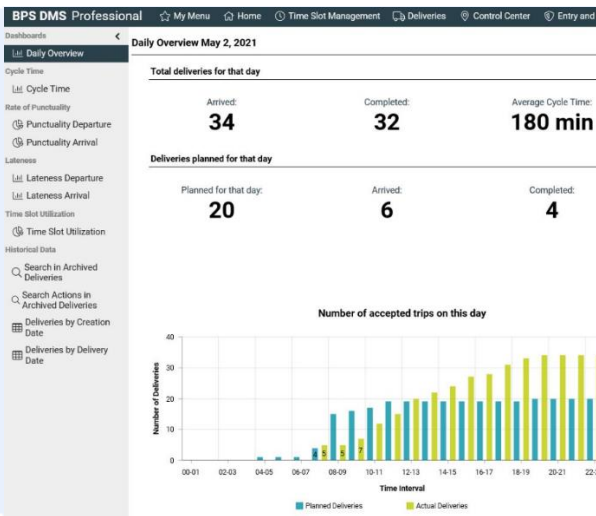


Proudly building Britain's future heritage



Themes:



Summary:

An enhanced delivery management system was created specifically for the development by engaging with the supply chain. This pulled in successful examples from other industries to learn how to more effectively manage logistics on site given the complex multi-phase nature of the project with several access points owned by multiple contractors.

Environmental Benefits:

- The enhanced delivery management system details out the best route to site and minimises journey distances. Reducing a projects carbon footprint.
- The enhanced granularity of information allows further interrogation of vehicle movement to best optimise delivery numbers.

Business Benefits:

- Successfully operating a delivery management system which meets the requirements of multiple contractors increases the productivity of the project by allowing a greater number of vehicles through the gates each day. This is one tool to support the project finishing on time.

Supply chain excellence - logistics

Synchro supply

At the Battersea Power Station Development, it was identified early that logistics would be a key challenge given the multi-phase nature of the development with several different access points to the various projects on the development.

To help address this challenge the project examined different perspectives on logistics and looked to learn from other industries. The project team engaged with a software provider from the automotive industry – Inform. The team worked with them and supply chain partners to develop a piece of software that addressed constraints associated with traditional delivery management systems. As the system was based on one used from another industry it allowed the project team to view the problems surrounding logistics and site deliveries from a completely different viewpoint. This allowed the team to implement a solution that will grow and evolve as the business changes. This software is now available to the rest of the construction industry.

This new software was developed over the course of a year which included the below to more effectively manage logistics on site:

- Increased granularity of data associated with the deliveries.
- Linking bay sizes on site with vehicle sizes.
- Adapted specifically to cater to multi-phase developments with multiple access gates.
- Creating consistent information inputs and outputs for all projects.
- Transparency of information for information of all vehicles coming to site.
- Simple and intuitive input page for contractors.
- Inclusion of weekly logistics routes which get updated on the portal for each of the projects.
- Deliveries tracking.
- Best routes to the site included within the (minimising left turns).
- Training videos and user guides have been produced to help users successfully utilise.

The software has successfully been live on the project for over 2 years now and has won several awards including the supply chain excellence award in 2020.